

Young People's Education and Skills Operational Sub-Group

Latest participation, NEET and 'not known' statistics

Item no: 5

Date: 08 February 2013

Contact: Glyn Parry

Telephone: 020 7934 9730

Email: glyn.parry@londoncouncils.gov.uk

1 16 - 18 Academic Age Summary (August 2012 – latest available from [NCCIS](#)¹)

The latest not in education, employment or training (NEET) percentage for London is 4.8% (a 0.2% increase on the previous month), which is below the national average of 6.6%. The current percentage of young people whose participation status is 'not known' is 8.2% which is 3.7% lower than the national average (a reversal of previous performance this year) (see 1.1).

The three month average comparison between 2012/13 and 2011/12 shows improved performance for London in relation to both NEET and not known figures (see 1.2 and 1.3). The percentage of 16-18 year olds who are NEET varies significantly by borough, ranging from less than 3% to over 8% (excluding the City of London) (see 1.4).

1.1 Volume and percentage of 16-18 year olds who are participating in education, employment or training (EET), not in education, employment or training (NEET) and 'not known'

Region	Adjusted EET	Adjusted NEET	% NEET	16-18s not known	% 16-18s not known
England	1,508,423	107,056	6.6%	207,328	11.9%
London	215,162	10,859	4.8%	19,127	8.2%

1.2 Percentage of 16-18 year olds who are NEET for the past three months for 2012/13 and 2011/12²

Region	2012-13				2011-12			
	Jun-12	Jul-12	Aug-12	Ave	Jun-11	Jul-11	Aug-11	Ave
England	5.9%	6.3%	6.6%	6.3%	6.9%	7.4%	7.6%	7.0%
London	4.5%	4.6%	4.8%	4.6%	5.6%	5.6%	5.2%	5.2%

1.3 Percentage of 16-18 year olds whose participation status is 'not known' for the past three months for 2012/13 and 2011/12³

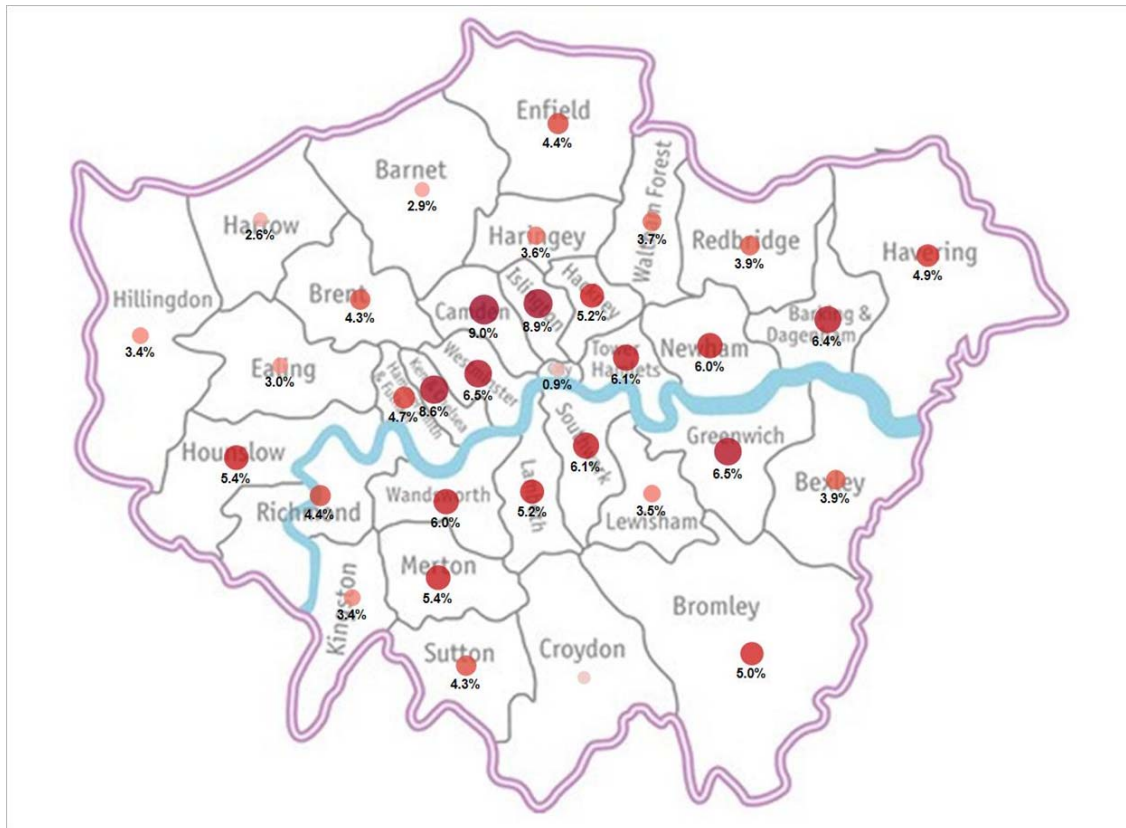
Region	2012-13				2011-12			
	Jun-12	Jul-12	Aug-12	Ave	Jun-11	Jul-11	Aug-11	Ave
England	8.8%	11.0%	11.9%	10.6%	8.5%	10.4%	11.5%	10.1%
London	8.3%	7.9%	8.2%	8.1%	10.7%	10.9%	11.6%	11.0%

¹ The [National Client Caseload Information System](#) (NCCIS) is a gateway for local authorities to access and submit performance data and information to the Department for Education regarding the participation of 16-18 year olds in education, employment and training.

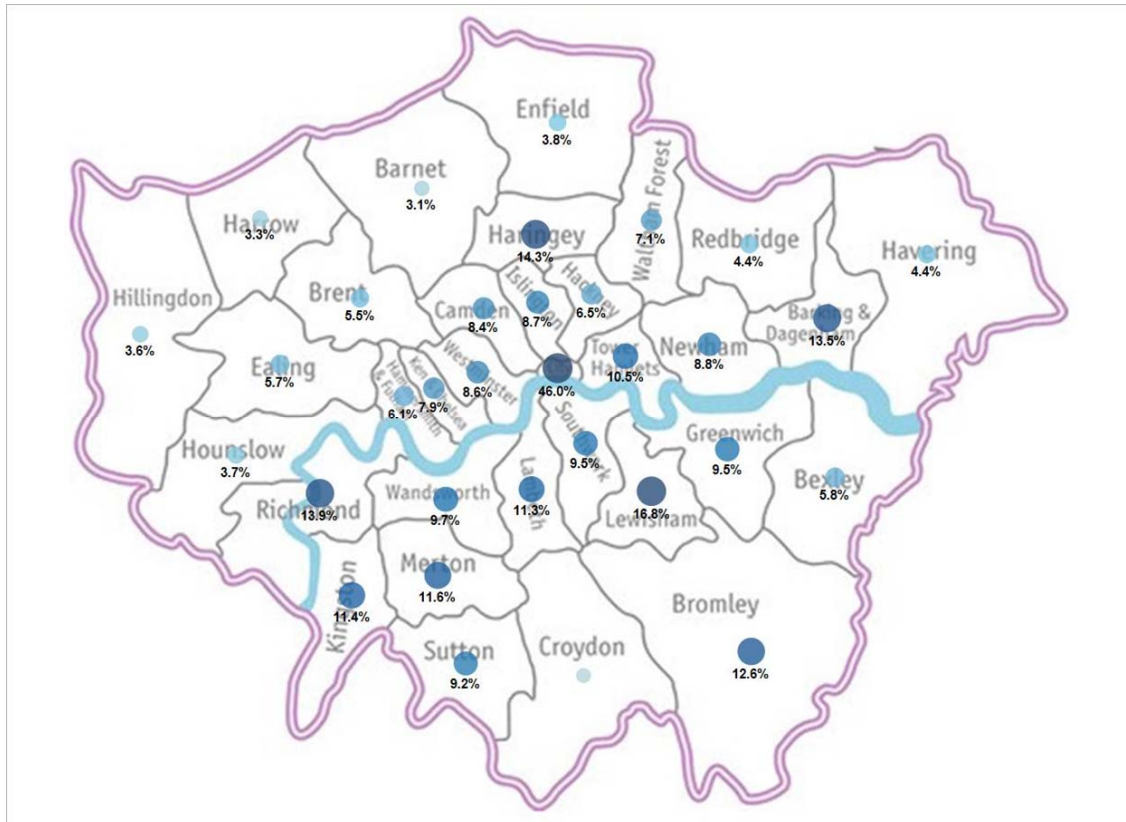
² The three month average November to January is the national measure for NEET used by the Department for Education

³ The three month average November to January is the national measure for NEET used by the Department for Education

1.4 16-18 year olds NEET by London Borough⁴



1.5 16-18 year olds 'not known' by London Borough⁵



⁴ No NEET data present for the London Borough of Croydon on NCCIS.

⁵ No NEET data present for the London Borough of Croydon on NCCIS.

2 16 – 17 Participation in Education and Training (June 2012 – latest available from [Department for Education website](#)⁶)

On 3 October the Department for Education (DfE) published 16 and 17 year old participation data that highlights where participation is rising, static or falling. The data also provides a break down of participation by type of establishment, age, gender and ethnic group.

London's participation in 2012 is 89.6% and has improved by 1.4% on 2011 participation levels; London's participation is also 2.3% above the national figure (see 2.1). The majority of 16 and 17 year olds in London (87.3%) are participating in full time education and training which is 5.6% higher than the national figure, although a lesser proportion are participating in Apprenticeships and employment with training than nationally (see 2.2). The percentage participating at 16 in London is higher than those participating at 17 by 4.4%, and participation levels are higher amongst girls (see 2.3).

2.1 Participation percentage over time⁷

Region	Jun 2011	Dec 2011	Mar 2012	Jun 2012	%pt change in last 12 months
England	86.5%	87.8%	87.7%	87.3%	0.8% ➡
London	88.2%	86.1%	88.8%	89.6%	1.4% ⬆

2.2 Participation percentage by type of activity

Region	Proportion of 16 and 17 year olds recorded as participating in:				
	Full time education and training	Apprenticeship	Employment with training	Other	Total
England	81.7%	3.8%	1.1%	0.7%	87.3%
London	87.3%	1.8%	0.2%	0.3%	89.6%

2.3 Participation percentage by age and gender

Region	% 16 year olds recorded as participating in education or training			% 17 year olds recorded as participating in education or training		
	Female	Male	Total	Female	Male	Total
England	91.8%	89.6%	90.7%	84.6%	81.7%	84.0%
London	92.8%	90.8%	91.8%	88.9%	85.9%	87.4%

3 16-24 Quarterly Brief Summary (November 2012, Quarter 3 – latest available from the [Department for Education Statistical First Release](#))⁸

Both the volume and percentage of 16-24 year olds who are NEET in Quarter 3 of 2012 in London has increased since Quarter 2 of 2012 (NEET levels always peak at Quarter 3), but is an improvement on the position in the same quarter last year (see 3.1 table).

⁶ The Department for Education (DfE) uses information from the Client Caseload Information System to estimate the number and proportion of young people participating in different types of education and training in each local authority area. The figures are intended to support local authorities to track their participation performance and their progression to achieving their Raising the Participation Age (RPA) goals

⁷ Times series used in this table is determined by the Department for Education and represents a 12 month period

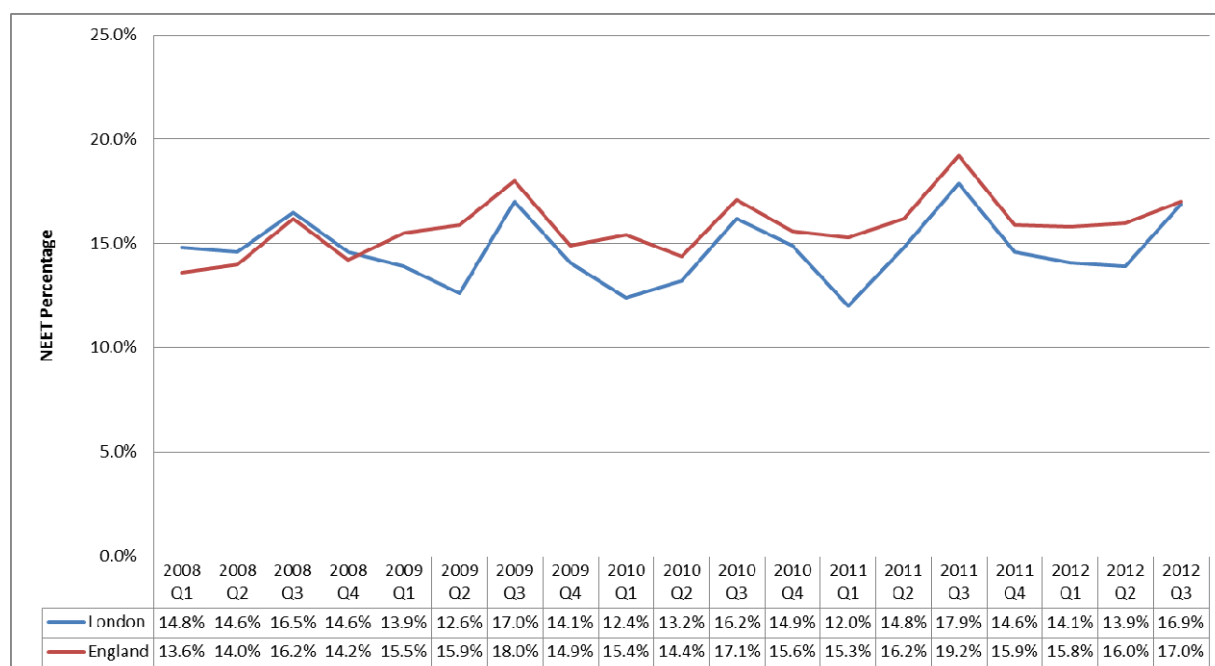
⁸ The 16-24 Quarterly Brief Summary combines the latest 16-18 NEET statistics with the [Labour Force Survey](#) to create a profile of the NEET 16-24 age group. Quarter 4 will be available on 28 February 2013.

The London NEET percentage remains very marginally below the national figure by 0.1%, which has been historically below the national average since early 2009. The most recent data, however, potentially indicates the NEET percentage in London rising to reflect more closely national NEET levels (see 3.1 line graph).

The volume and percentage of 18-24 year olds and 19-24 year olds who are NEET in Quarter 3 of 2012 in London has also increased since Quarter 2 of 2012. However, the NEET percentage for both age groups decreased when compared to the same quarter the year before. The London NEET rate for 18-24 year olds remains below the national average by 0.5% and is the same as the national average for 19-24 year olds (see 3.2 and 3.3).

3.1 Number of 16-24 year olds NEET

Region	Year (Quarter 3)							
	2009		2010		2011		2012	
	Volume	%	Volume	%	Volume	%	Volume	%
England	1,073,000	18.0%	1,022,000	17.1%	1,163,000	19.2%	1,027,000	17.0%
London	149,000	17.0%	138,000	16.2%	154,000	17.9%	148,000	16.9%



3.2 Number of 18-24 year olds NEET

Region	Year (Quarter 3)							
	2009		2010		2011		2012	
	Volume	%	Volume	%	Volume	%	Volume	%
England	923,000	19.7%	880,000	18.7%	1,013,000	21.1%	912,000	19.0%
London	134,000	18.6%	121,000	17.4%	137,000	19.4%	134,000	18.5%

3.3 Number of 19-24 year olds NEET

Region	Year (Quarter 3)							
	2009		2010		2011		2012	
	Volume	%	Volume	%	Volume	%	Volume	%
England	811,000	20.2%	756,000	18.6%	896,000	21.5%	821,000	19.6%
London	123,000	19.2%	100,000	16.3%	126,000	19.9%	128,000	19.6%

