

# Young People's Education and Skills Operational Sub-Group

## GCSE, GCE, Applied GCE A/AS level Performance

Item No: 10

**Report by:** Glyn Parry

**Job title:** Strategy and Policy Manager

**Date:** 10 February 2012

**Contact:** Glyn Parry

**Telephone:** 020 7934 9730

**Email:** [glyn.parry@londoncouncils.gov.uk](mailto:glyn.parry@londoncouncils.gov.uk)

---

**Summary** On 26 January 2012, the Department for Education (DfE) published Statistical First Releases (SFRs) covering achievement at GCSE, GCE, Applied GCE A/AS level and other equivalent qualifications in 2010/11. This paper provides a headline summary of London's performance for these qualifications.

**Recommendations** OSG members are asked to:

- Note the pan-London and individual borough performance covered in this report.

---

## 1 Background

- 1.1 The latest national statistics on GCSE, GCE, Applied GCE A-level and other equivalent qualifications for 2010/11 produced by the DfE were released on 26 January 2012 according to the arrangements approved by the UK Statistics Authority. These figures are revisions of the provisional data released in October 2011, and will be finalised later this year.
- 1.3 This paper summarises some of the headline data contained in the SFRs. Further investigation into the data can be undertaken [here](#) for GCSE results and [here](#) for GCE, Applied GCE A/AS equivalent examination results.

## 2 GCSE Performance in London

- 2.1 The SFR for GCSE examinations and other accredited qualifications is based on data collated for the 2011 secondary school performance tables, which has been checked by schools. The data is based on pupils reaching the end of Key Stage 4, typically those starting the academic year aged 15.
- 2.2 2010/11 headline performance for London is as follows:-
- 61.9 per cent achieved five or more GCSEs at grade A\* to C or equivalent including English and mathematics GCSEs or iGCSEs in London. This compares to 58.9 per cent nationally and is an increase of 3.9 percentage points from 2009/10 (see Appendix 1 for a local authority breakdown).

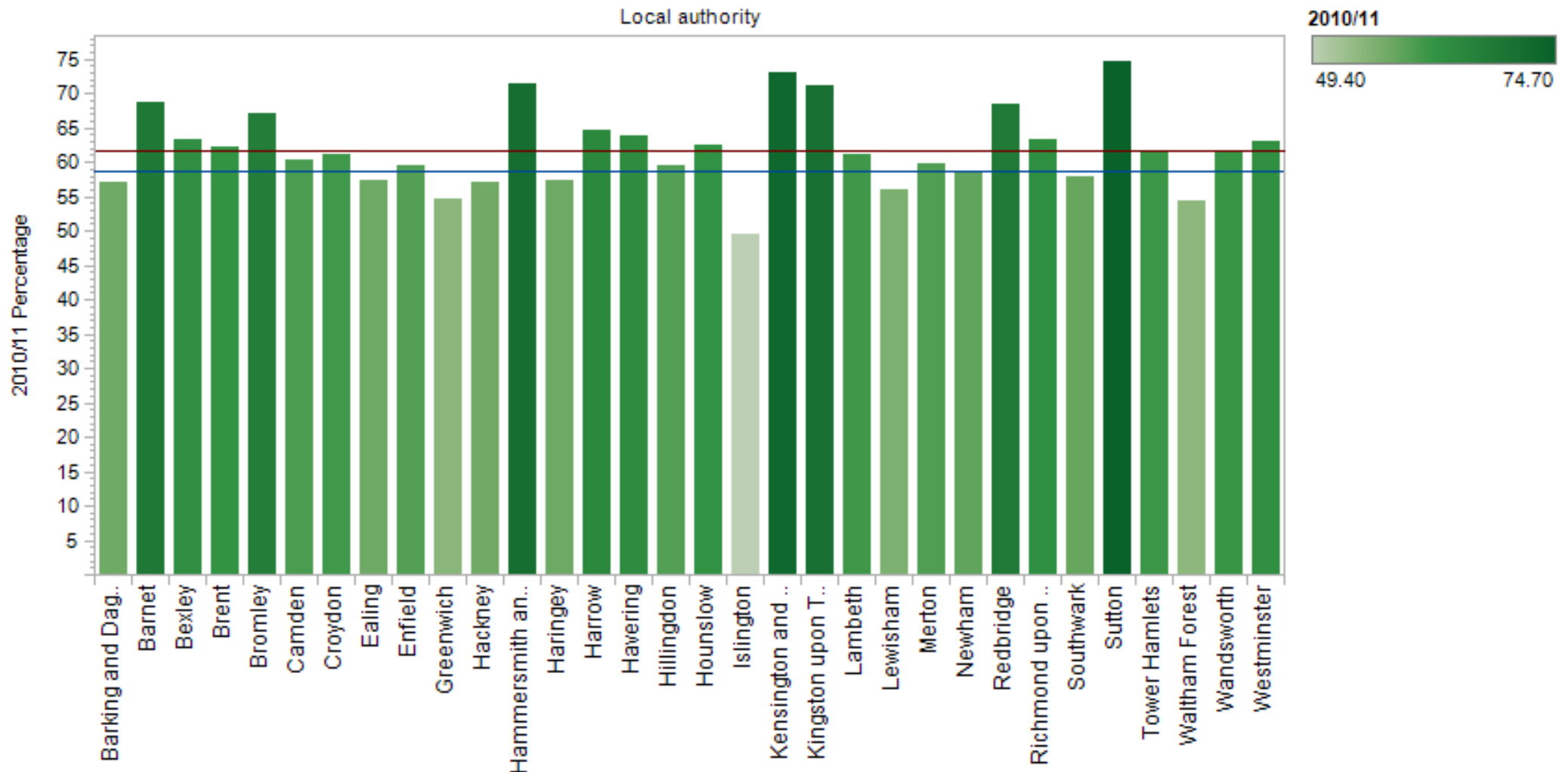
- All but three London local authorities saw an improvement in their five or more GCSE at grade A\* to C or equivalent including English and mathematics GCSEs or iGCSEs results from 2009/10. 12 local authorities saw an improvement greater than the overall rate of improvement for the region (3.9 percentage points), and two local authorities (Haringey and Tower Hamlets) saw an improvement of nearly ten percentage points (see Appendix 2 for a local authority breakdown).
- 62.4 per cent achieved English and mathematics GCSEs or iGCSEs at grades A\*-C in London compared to 59.5 per cent nationally.
- 82.0 per cent achieved 5 or more GCSEs at grade A\* to C or equivalent in London. This compares to 79.5 per cent nationally and is an increase of 4.2 percentage points from 2009/10
- 24.7 per cent were entered for all of the subject areas of the English Baccalaureate and 17.9 per cent passed every subject area with grades A\* to C. This compares to 23.7 per cent and 17.6 per cent nationally.

### **3 A Level Point Scores**

- 3.1 The SFR for GCE and Applied GCE A/AS-level examinations and other equivalent qualifications is based on data collated for the 2011 School and College (Key Stage 5) Performance Tables, which been checked by schools, and covers achievements in all Level 3 qualifications approved under Section 96 of the Learning and Skills Act (2000). The DfE Performance Table points are used to calculate point scores for all Level 3 qualifications.
- 3.2 2010/11 headline performance for London for students aged 16-18 in schools and colleges entered for all Level 3 qualifications in 2010/11 is as follows:-
- The average point score per student entered for Level 3 qualifications in 2010/11 was 712.8 in London compared to 745.9 nationally. This, however, is an increase on the 2009/10 point score of 698.8 and London's performance has improved at a higher rate than nationally (see Appendix 3 for a local authority breakdown).
  - All but four London local authorities saw an improvement in their average point score per student from 2009/10. Two local authorities (Lewisham and Harrow) saw a radical improvement in their point scores with an increase of 49.1 and 67.9 points respectively (see Appendix 4 for a local authority breakdown).
  - The average Level 3 point score per entry has increased to 214.5 compared to an average of 212.6 in 2009/10 in London. This compares to a 216.2 point score per entry nationally.
  - 95.5 per cent of students achieved passes equivalent in size to at least two GCE/Applied GCE A levels in London. This compares to 94.0 per cent nationally and is an increase of 1.1 percentage points from 2009/10.
  - For students in London aged 16-18 in schools and colleges entered for GCE/Applied GCE A Level and Double Awards in 2010/11, 10.1 per cent of students achieved 3 or more A\* or A grades at A Level. This compares to 13.1 per cent nationally and is an increase of 3.2 percentage points from 2009/10.

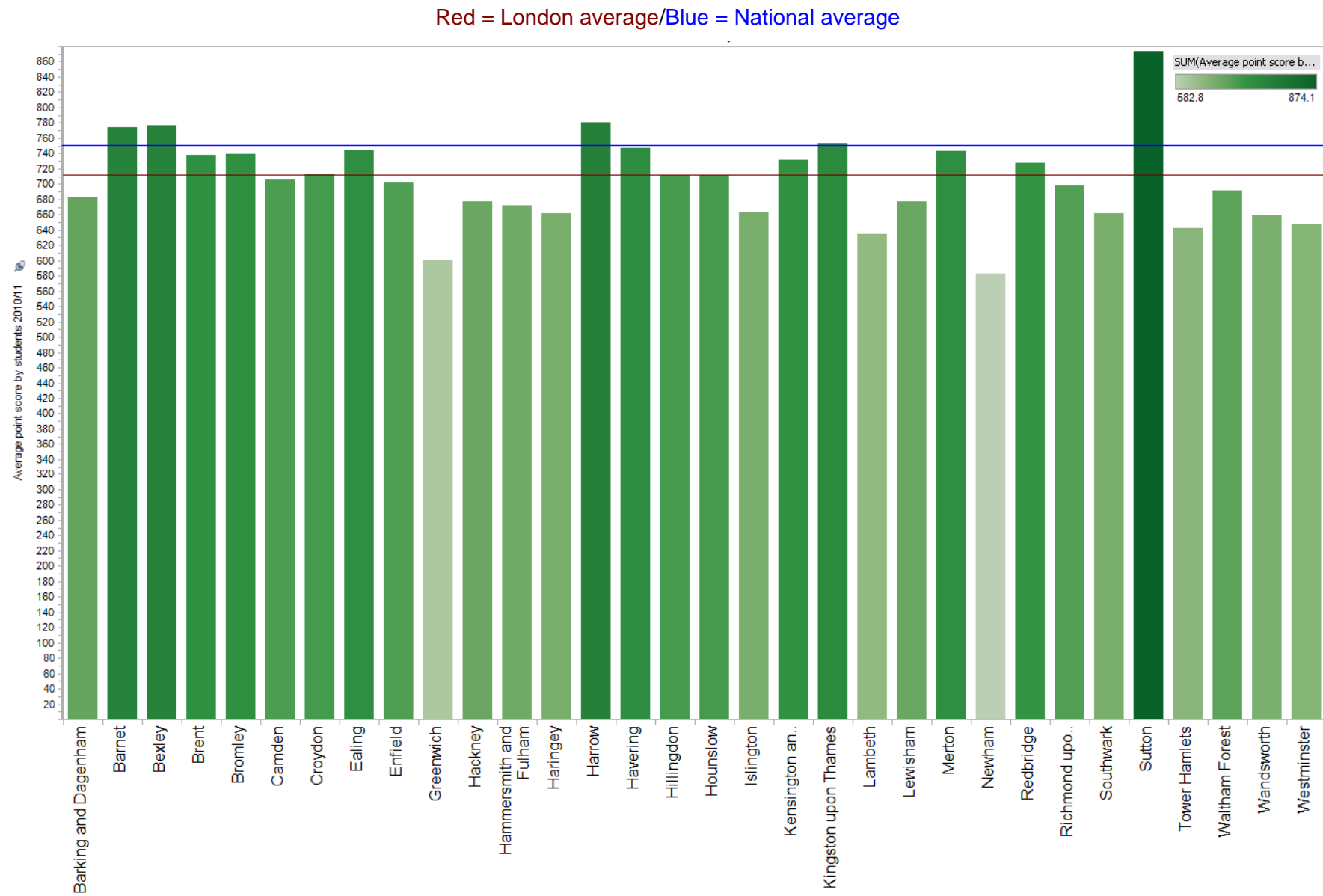
**Appendix 1:** Local authority breakdown of 5 or more GCSEs at grade A\* to C or equivalent including English and mathematics GCSEs or iGCSEs results in London (2010/11)

Red = London average/Blue = National average





### Appendix 3: Local authority breakdown of average point score per student entered for Level 3 qualification in London (2010/11)



**Appendix 4:** Local authority breakdown of average point score variation per student entered for Level 3 qualifications in London (2010/11)

