

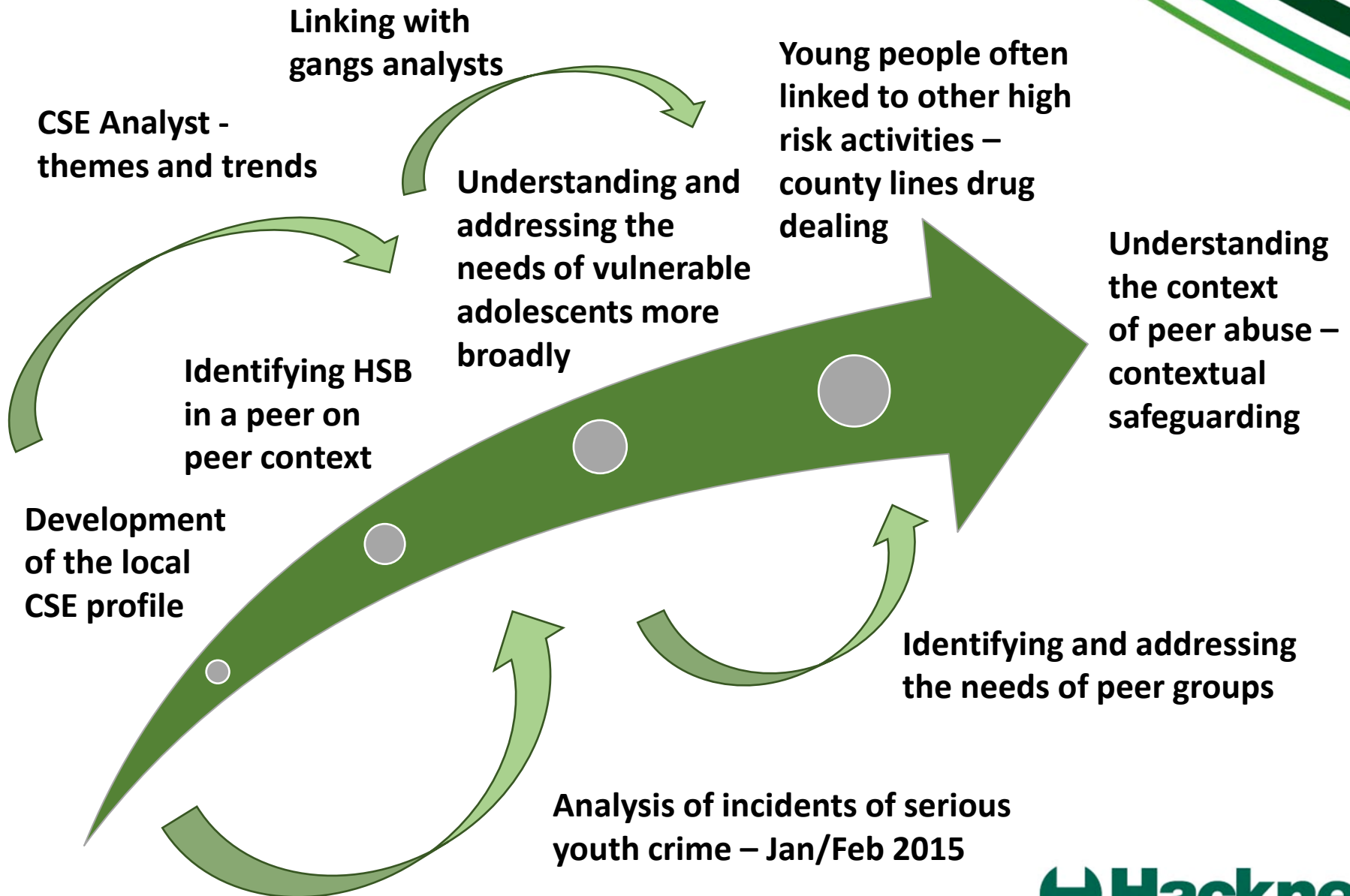


# **Developing responses to peer-abuse: learning from the MSU local site support project**

**Sarah Wright**

Director of Children and Families, LB Hackney

# Hackney's journey so far



# A holistic approach to peer abuse

- Working alongside the MsUnderstood Programme
- HSB Multi-Agency Planning (MAP) meetings
- Development of targeted interventions outside of the criminal justice system
- Use of the Good Lives Model - harmful sexual behaviour/peer abuse cannot be understood in isolation
- Assessment and intervention plans that address both behaviours/attitudes and contextual factors

# MsUnderstood Pilot Assessment Tool

		Points for discussion / recording at HSB MAP meeting							
		Young person's current situation	Young person's HSB	Vulnerability factors	Risk factors	Resilience factors	Strengths	Professional involvement to date	Planned actions / interventions
Individual and contextual factors to consider	Individual young person's characteristics								
	Family / Home(s) characteristics								
	Peer group(s)								
	School(s)								
	Neighbourhood spaces (specify)								

# Challenging perceptions of young people

## Multiple vulnerabilities

- Exposure to domestic violence
- Parental drug and alcohol use
- Concerns about parental mental health/learning difficulties
- Absent fathers
- History of sexual abuse
- Victim of crime
- Vulnerability to exploitation



**Perpetrators or victims?**

## Complex behaviours

- Offending behaviour
- Gang affected/affiliated
- Drug and alcohol use
- Youth violence
- School exclusion
- Fragmented care histories