

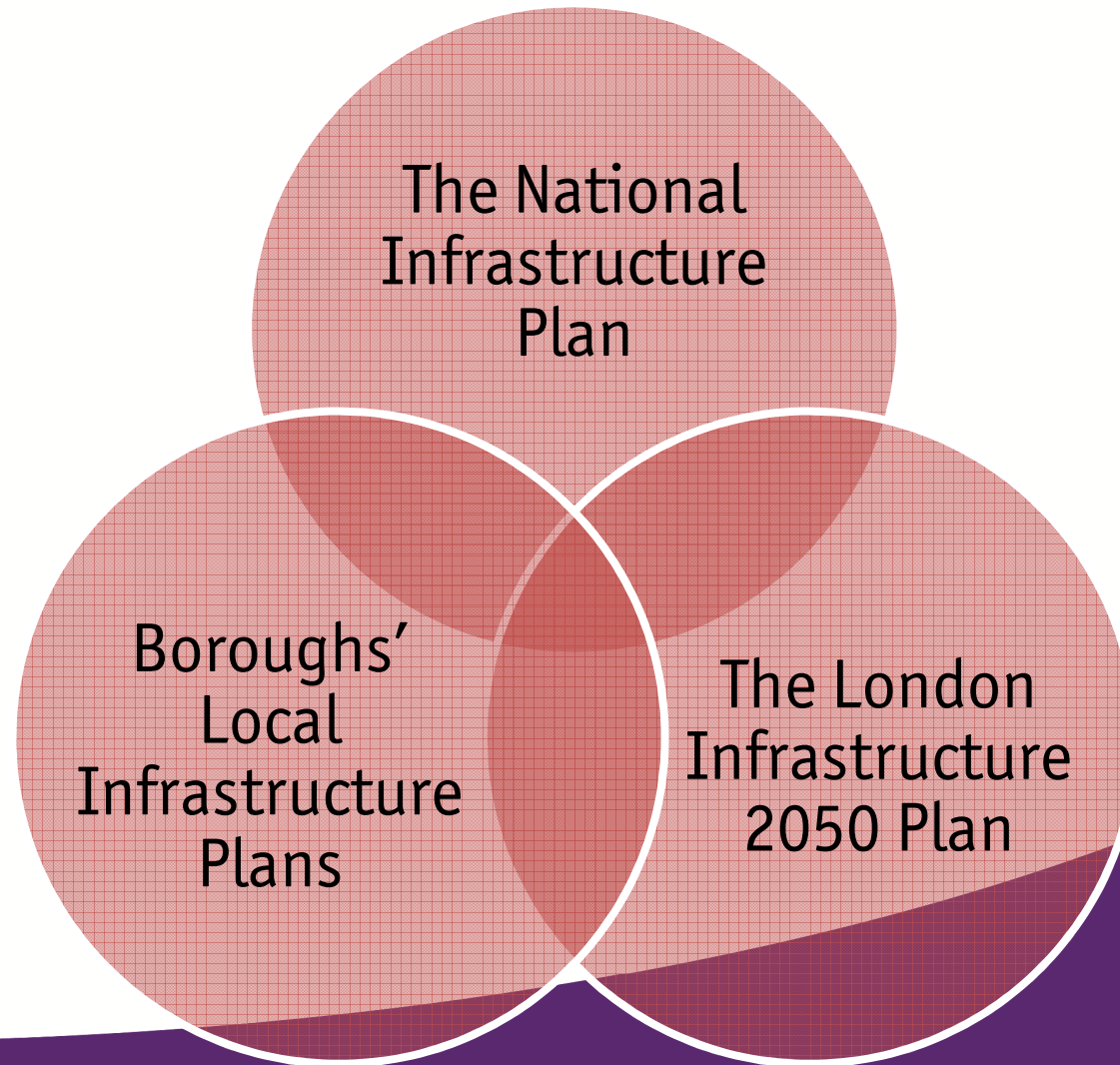
Katharina Winbeck

Head of Transport, Environment and
Infrastructure Policy, London Councils

London Councils' Approach to Infrastructure

- The different levels of infrastructure planning
- What is infrastructure?
- London Councils Polling results
- London Councils Infographic
- Summary

The different levels of infrastructure planning



What is infrastructure?



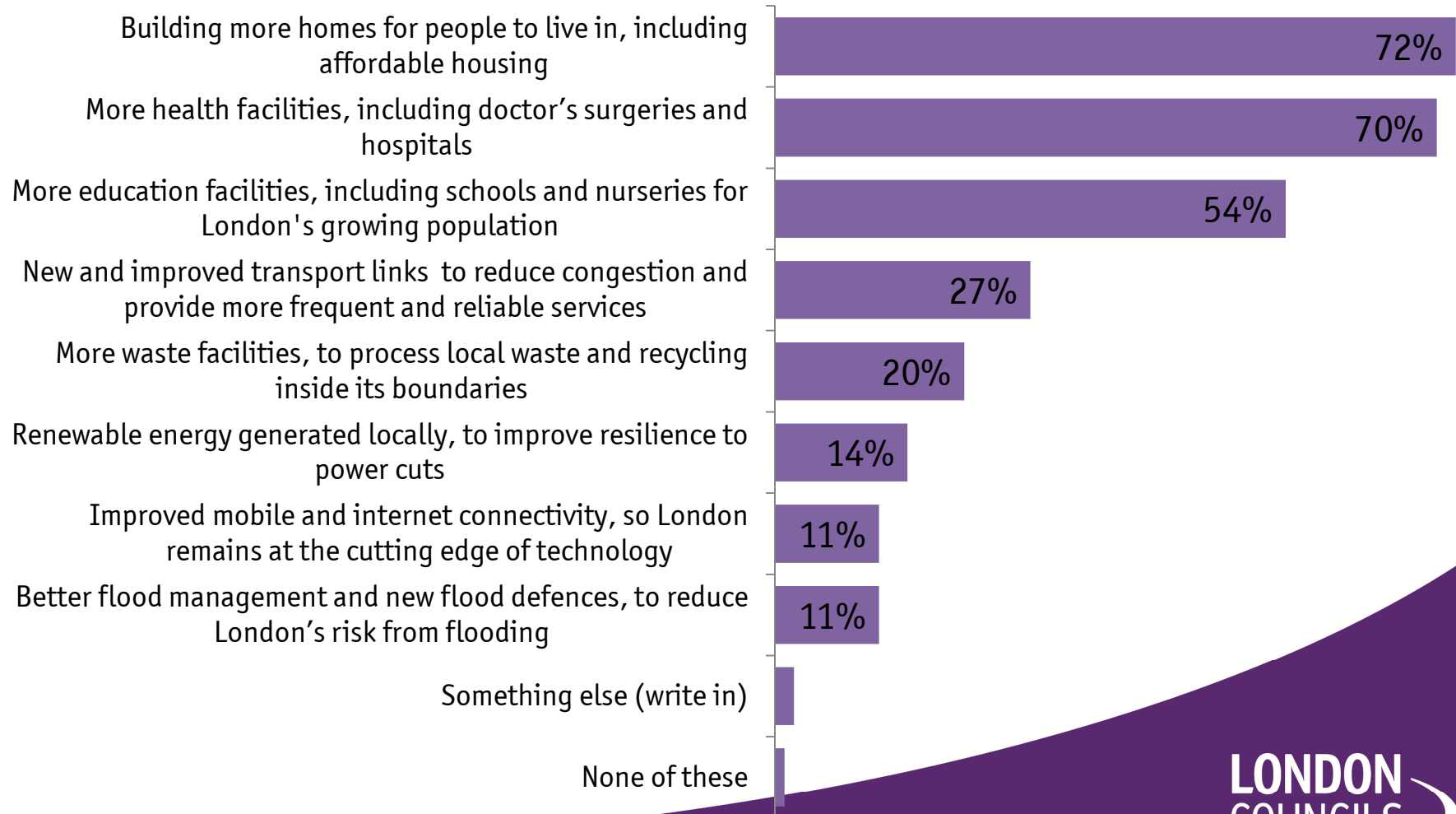
London Councils' Polling



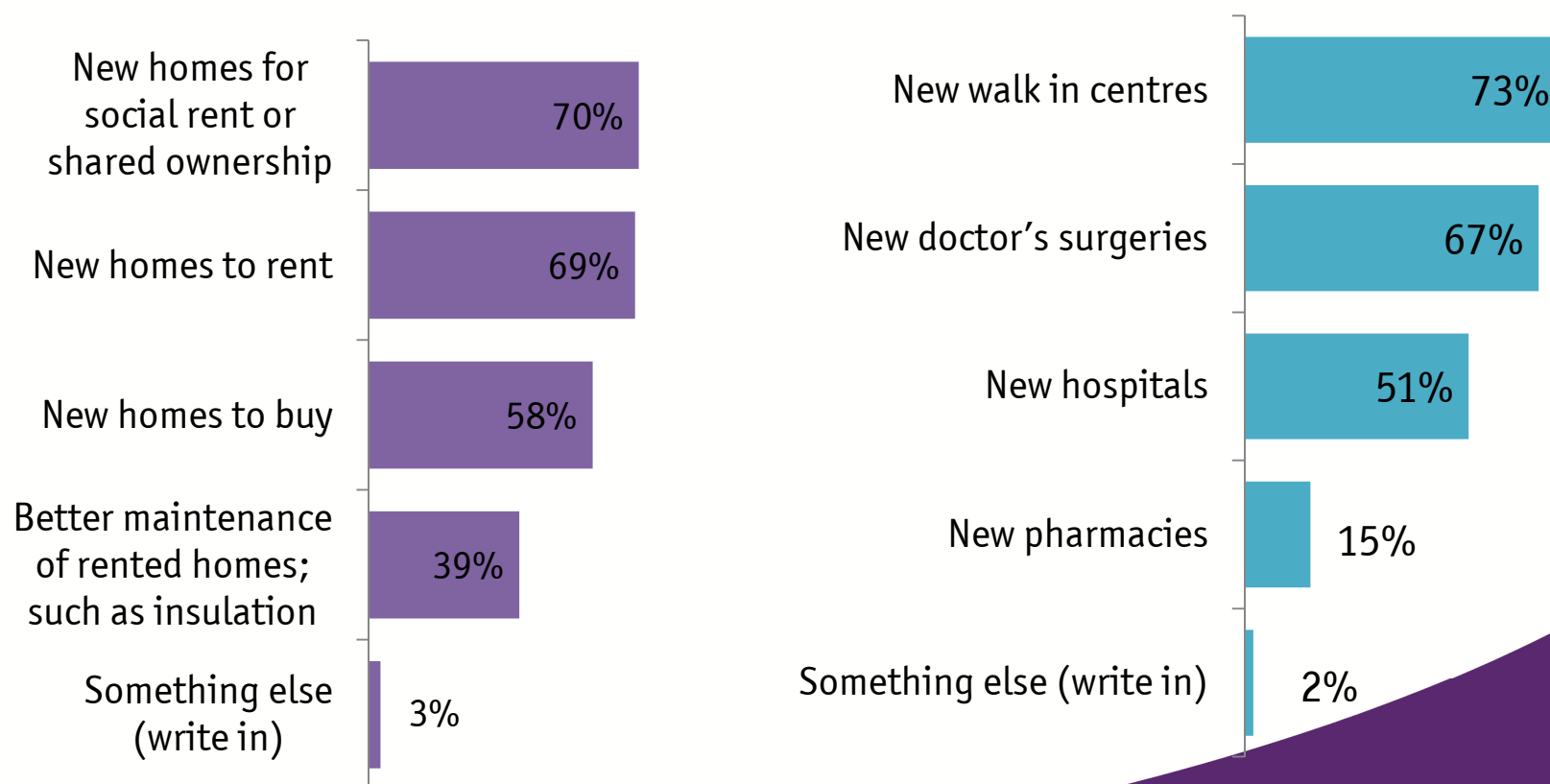
London Councils' Polling Headlines

- **94%** of Londoners agree that continued investment in infrastructure is **essential** to a city like London
- **92%** of Londoners agree that continued investment in infrastructure **would make London a better city**
- The **top three priorities for infrastructure investment are;**
- **Housing, Health and Education**

Thinking about London as a whole, what would your top 3 priorities for infrastructure spending be?

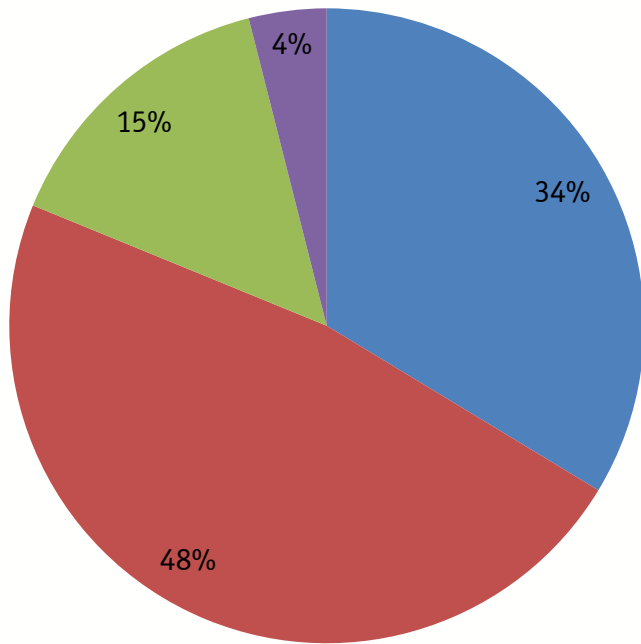


You said that **housing/health** should be a priority for investment in London. Which of these specific areas should be prioritised?



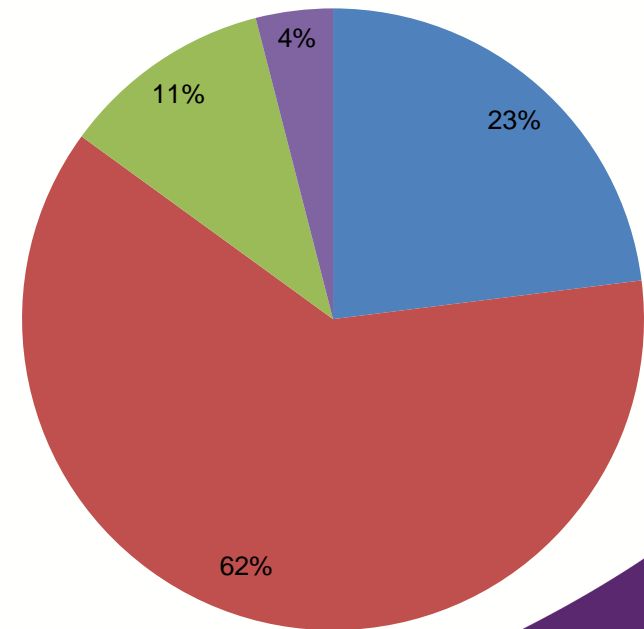
Which statement most closely matches your view?

London

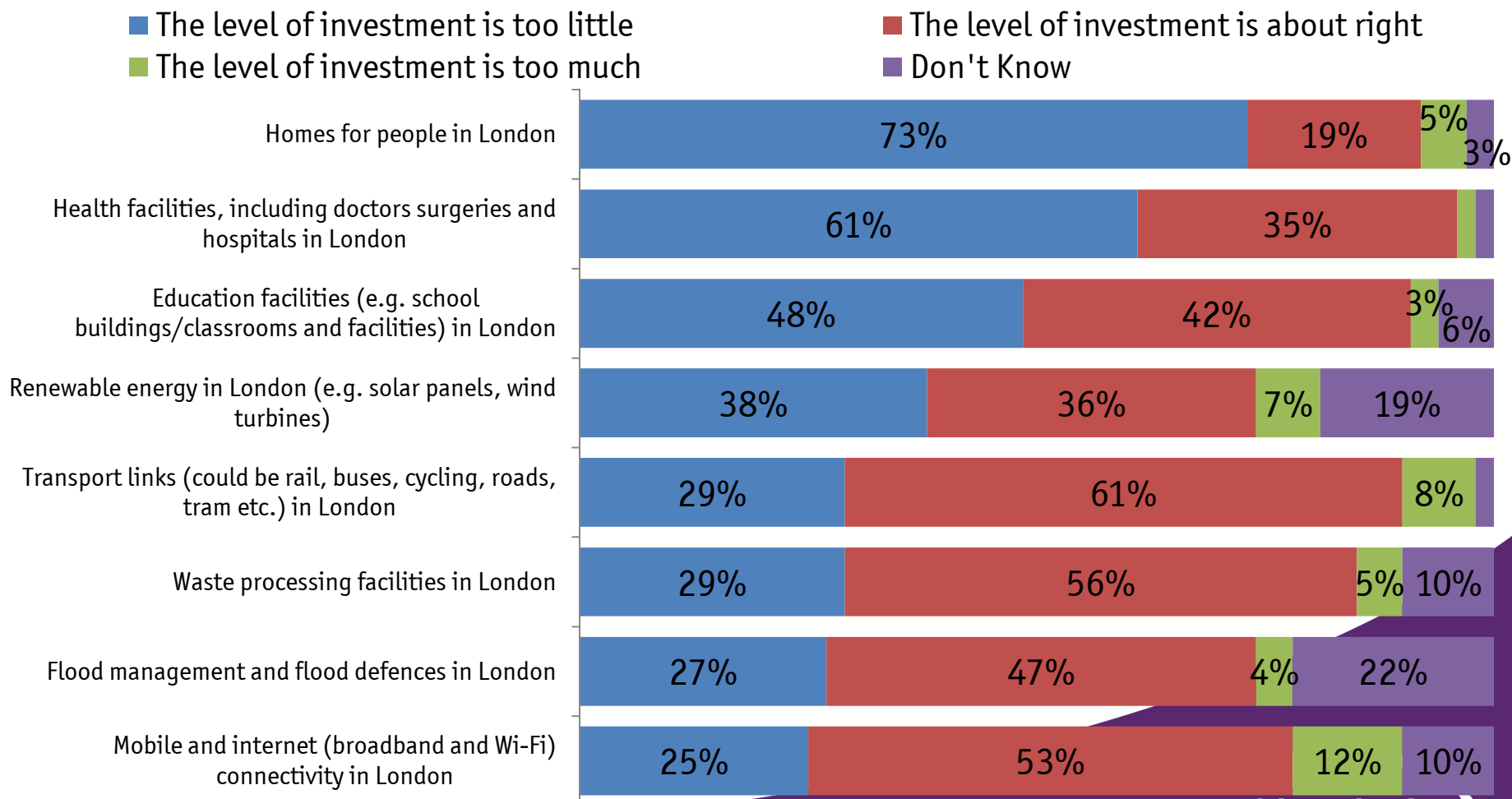


- We should be aiming for world class infrastructure, even if this involves a high level of investment
- We should be aiming for solid improvements to our infrastructure, even if this involves more investment
- We should be aiming for infrastructure that maintains the current standard, with lower levels of investment
- We should not be focusing on infrastructure at all at the current time

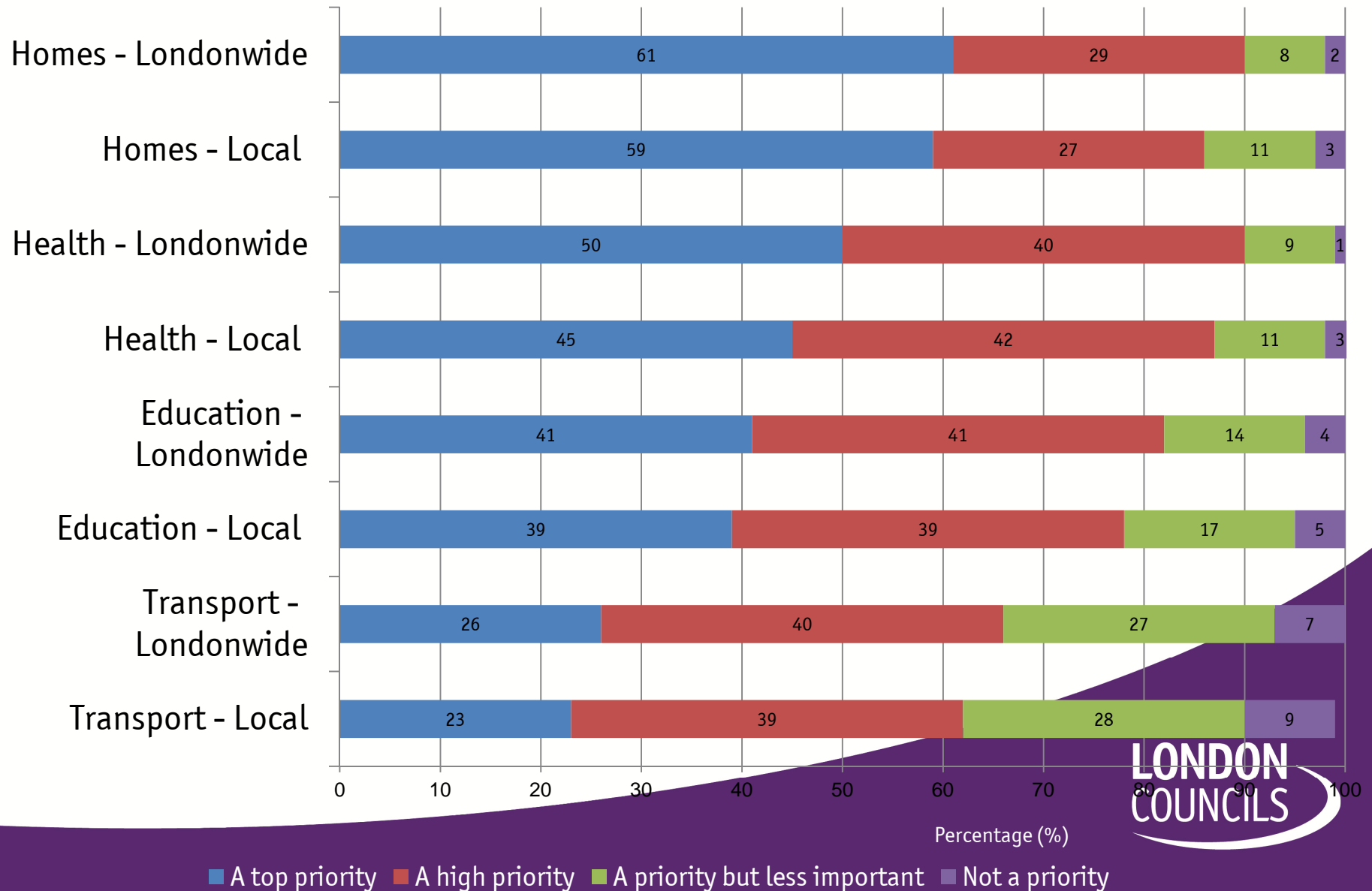
UK



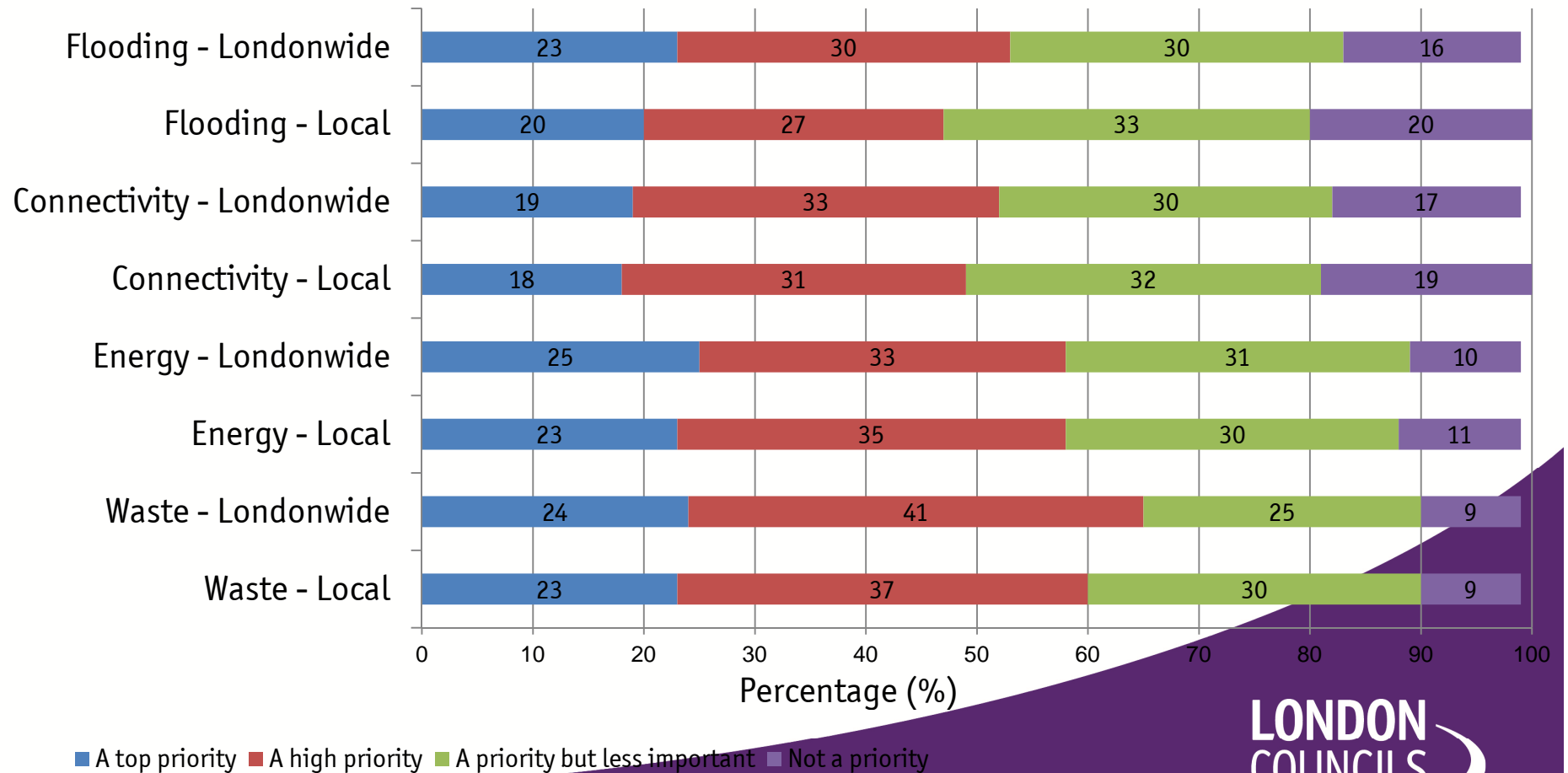
Please tell me, whether you think the level of investment in London is too little, too much or about right.



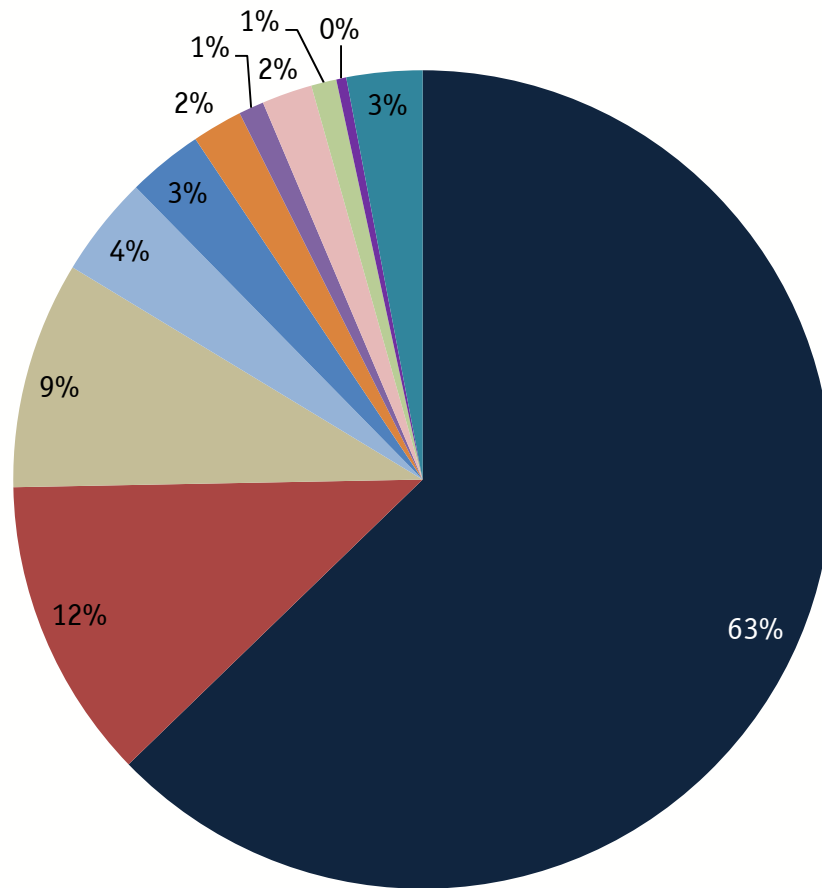
How much of a priority do you think each of these infrastructure investments should be...



For your local area, and for London as a whole, please tell me how much of a priority you think each of these infrastructure investments should be.



How do you think infrastructure in London should be paid for?



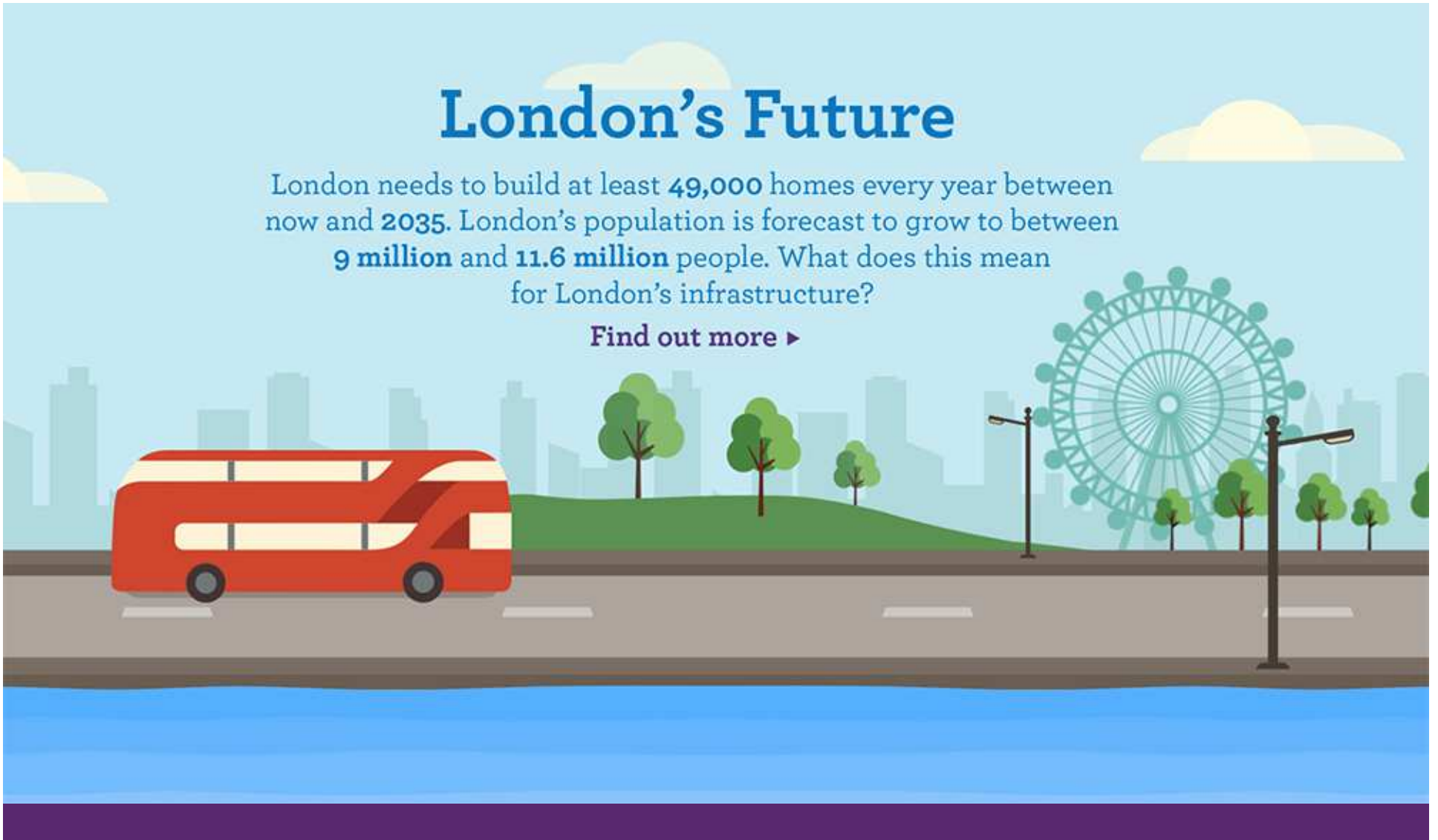
- Funded by central government
- Developers
- Public organisations such as TfL, the Environment Agency, NHS, Mayor of London or councils
- Funded privately (for example by companies, pension funds etc.)
- Higher council tax
- Visitors to London, for example through a tourist levy
- People who live outside London but work in London should contribute
- Other (write in)
- None of these
- Increases in transport fares
- Don't know

London Councils Infographic

London's Future

London needs to build at least **49,000** homes every year between now and **2035**. London's population is forecast to grow to between **9 million** and **11.6 million** people. What does this mean for London's infrastructure?

[Find out more ▶](#)



<http://alexcreates.net/infographics/london-councils/index.html>

Summary

- In order to create sustainable places, we need a broad definition of infrastructure
- Londoners are already quite aware of the various types of infrastructure and of the importance of continuing investment
- London Councils will continue to work in all the different policy areas to facilitate a prosperous and sustainable London now and in the future