

Operational Sub Group (OSG)

Latest participation, NEET and 'not known' statistics

Item no: 4

Date: 14 June 2013

Contact: Glyn Parry

Telephone: 020 7934 9730

Email: glyn.parry@londoncouncils.gov.uk

1 16 - 18 Academic Age Summary (March 2013 – latest available from [NCCIS](#)¹)

The latest not in education, employment or training (NEET) percentage for London is 4.5% (a 0.1% decrease on the previous month), which is below the national average of 5.6%. The current percentage of young people whose participation status is 'not known' is 9.2% which is higher than the national average (by 1.3%) (see 1.1).

The three month average comparison between 2012/13 and 2011/12 shows a very similar profile in performance for London in relation to NEET, and an improvement in performance in terms of not known figures (see 1.2 and 1.3). The percentage of 16-18 year olds who are NEET and not known varies significantly by borough, ranging from 2% to over 9% and 1% to 30% respectively (excluding the City of London) (see 1.4 and 1.5).

1.1 Volume and percentage of 16-18 year olds who are participating in education, employment or training (EET), not in education, employment or training (NEET) and 'not known'

| Region | Adjusted EET | Adjusted NEET | % NEET | 16-18s not known | % 16-18s not known |
|---------|--------------|---------------|--------|------------------|--------------------|
| England | 1,589,782 | 93,904 | 5.6% | 138,726 | 7.9% |
| London | 225,741 | 10,545 | 4.5% | 23,159 | 9.2% |

1.2 Percentage of 16-18 year olds who are NEET for the past three months for 2012/13 and 2011/12²

| Region | 2012-13 | | | | 2011-12 | | | |
|---------|---------|--------|--------|------|---------|--------|--------|------|
| | Jan-13 | Feb-13 | Mar-13 | Ave | Jan-12 | Feb-12 | Mar-12 | Ave |
| England | 5.7% | 5.6% | 5.6% | 5.6% | 6.5% | 6.4% | 6.1% | 6.0% |
| London | 4.7% | 4.6% | 4.5% | 4.6% | 4.7% | 4.7% | 4.6% | 4.5% |

1.3 Percentage of 16-18 year olds whose participation status is 'not known' for the past three months for 2012/13 and 2011/12³

| Region | 2012-13 | | | | 2011-12 | | | |
|---------|---------|--------|--------|------|---------|--------|--------|-------|
| | Jan-13 | Feb-13 | Mar-13 | Ave | Jan-12 | Feb-12 | Mar-12 | Ave |
| England | 8.7% | 8.2% | 7.9% | 8.3% | 8.0% | 8.2% | 8.2% | 8.1% |
| London | 9.7% | 9.3% | 9.2% | 9.4% | 10.6% | 10.0% | 9.8% | 10.1% |

¹ The [National Client Caseload Information System](#) (NCCIS) is a gateway for local authorities to access and submit performance data and information to the Department for Education regarding the participation of 16-18 year olds in education, employment and training.

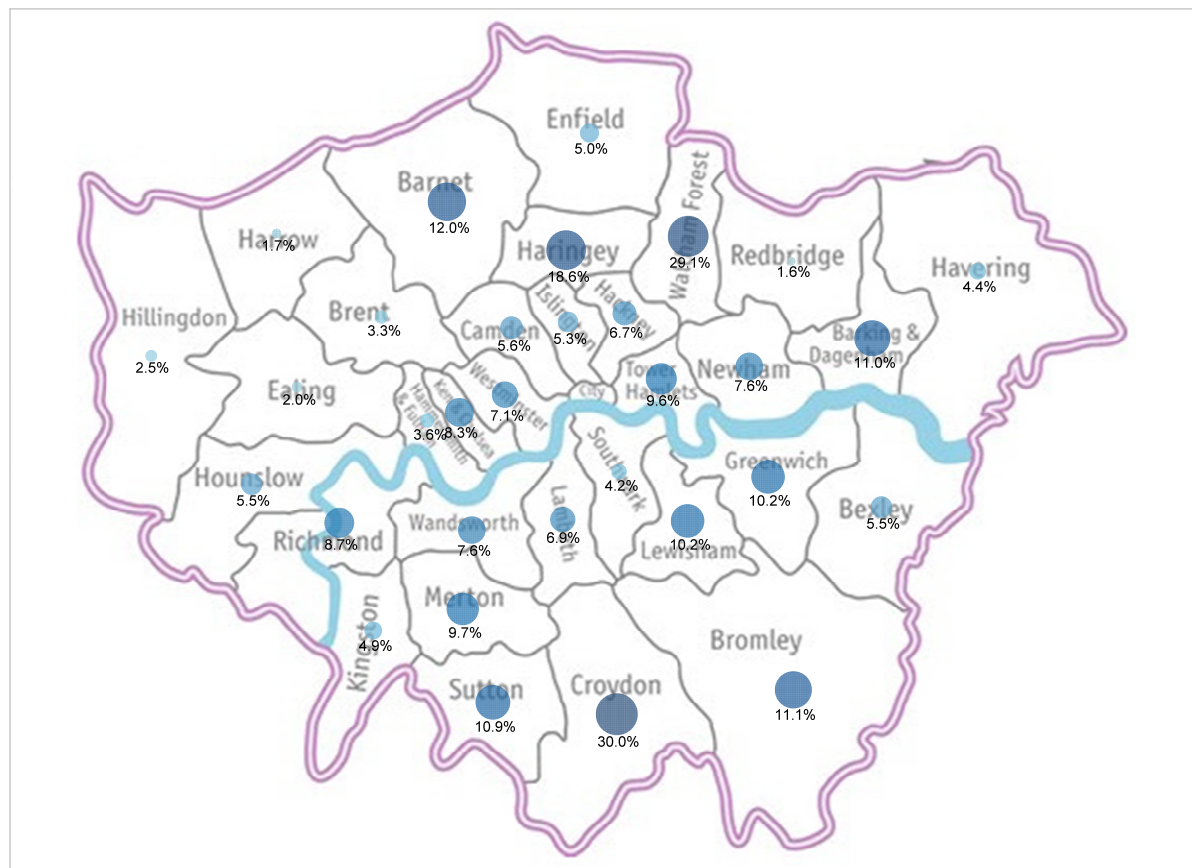
² The three month average is the national measure for NEET used by the Department for Education.

³ The three month average is the national measure for NEET used by the Department for Education.

1.4 16-18 year olds NEET by London Borough



1.5 16-18 year olds 'not known' by London Borough



2 16 – 17 Participation in Education and Training (December 2012 – latest available from the [Department for Education website](#)⁴)

On 16 May the Department for Education (DfE) published 16 and 17 year old participation data that highlights where participation is rising, static or falling. The data also provides a break down of participation by type of establishment, age, gender and ethnic group.

London's participation in 2012 is 89.0% and has improved by 2.9% on 2011 participation levels; London's participation is also 1.1% above the national figure (see 2.1). The majority of 16 and 17 year olds in London (87.3%) are participating in full time education and training which is 3.9% higher than the national figure, although a lesser proportion are participating in Apprenticeships and employment with training than nationally (see 2.2). The percentage participating at 16 in London is higher than those participating at 17 by 2.5% (but below the national average), and participation levels are higher amongst girls (see 2.3).

2.1 Participation percentage over time⁵

| Region | Dec 2011 | Mar 2012 | Jun 2012 | Dec 2012 | %pt change in last 12 months |
|---------|----------|----------|----------|----------|------------------------------|
| England | 87.8% | 87.7% | 87.3% | 87.9% | 0.1% → |
| London | 86.1% | 88.8% | 89.6% | 89.0% | 2.9% ↑ |

2.2 Participation percentage by type of activity

| Region | Proportion of 16 and 17 year olds recorded as participating in: | | | | |
|---------|---|----------------|--------------------------|-------|-------|
| | Full time education and training | Apprenticeship | Employment with training | Other | Total |
| England | 83.4% | 3.2% | 0.7% | 0.6% | 87.9% |
| London | 87.3% | 1.2% | 0.1% | 0.3% | 89.0% |

2.3 Participation percentage by age and gender

| Region | % 16 year olds recorded as participating in education or training | | | % 17 year olds recorded as participating in education or training | | |
|---------|---|-------|-------|---|-------|-------|
| | Female | Male | Total | Female | Male | Total |
| England | 92.6% | 90.7% | 91.6% | 85.8% | 82.8% | 84.3% |
| London | 91.2% | 89.4% | 90.3% | 89.5% | 86.1% | 87.8% |

3 16-24 Quarterly Brief Summary (May 2013, Quarter 1 – latest available from the [Department for Education Statistical First Release](#))⁶

Both the volume and percentage of 16-24 year olds who are NEET in Quarter 1 of 2013 in London have decreased since Quarter 4 of 2012, but are higher than the figures in the

⁴ The Department for Education (DfE) uses information from the Client Caseload Information System to estimate the number and proportion of young people participating in different types of education and training in each local authority area. The figures are intended to support local authorities to track their participation performance and their progression to achieving their Raising the Participation Age (RPA) goals.

⁵ Times series used in this table is determined by the Department for Education and represents a 12 month period.

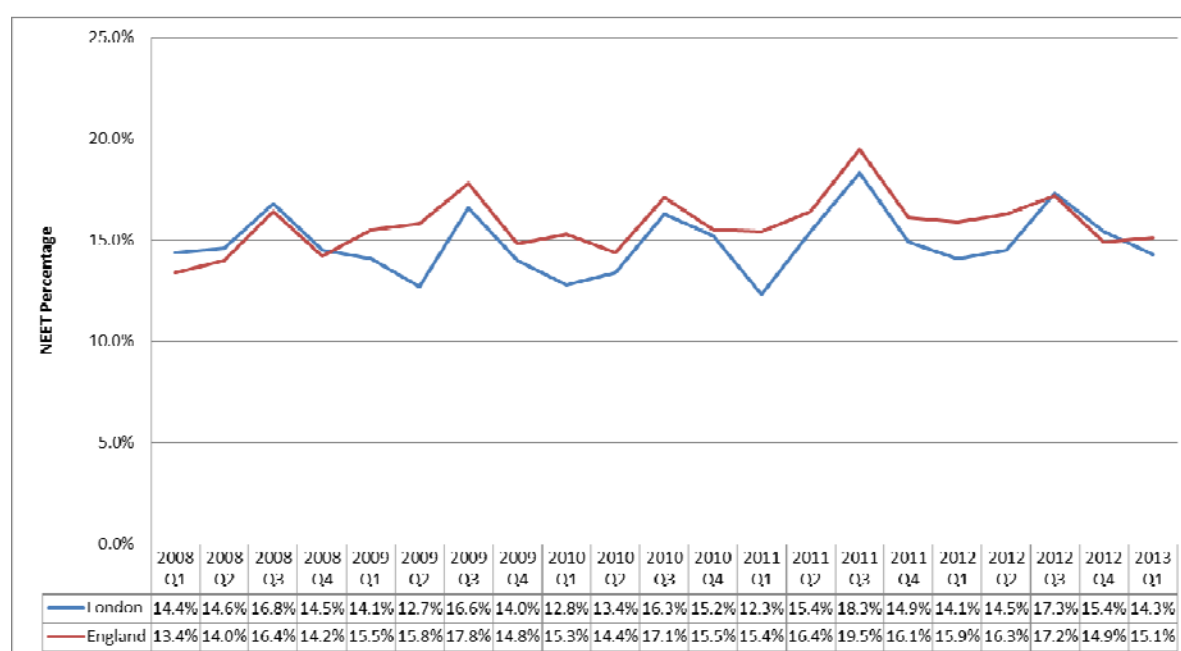
⁶ The 16-24 Quarterly Brief Summary combines the latest 16-18 NEET statistics with the [Labour Force Survey](#) to create a profile of the NEET 16-24 age group.

same quarter last year (see 3.1 table). The London NEET percentage is now below the national figure by 0.8%, which in the last quarter had risen above the national average for the first time since 2009 (see 3.1 line graph).

The volume and percentage of 18-24 year olds and 19-24 year olds who are NEET in Quarter 1 of 2013 in London has decreased since Quarter 4 of 2012. However, the NEET percentage and volume for both age groups increased when compared to the same quarter the year before. Both the London NEET rate for 18-24 and 19-24 year olds are below the national average by 1.2% and 1.8% respectively (see 3.2 and 3.3).

3.1 Number of 16-24 year olds NEET

| Region | Year (Quarter 1) | | | | | | | |
|---------|------------------|-------|---------|-------|---------|-------|---------|-------|
| | 2010 | | 2011 | | 2012 | | 2013 | |
| | Volume | % | Volume | % | Volume | % | Volume | % |
| England | 921,000 | 15.3% | 927,000 | 15.4% | 960,000 | 15.9% | 909,000 | 15.1% |
| London | 109,000 | 12.8% | 104,000 | 12.3% | 121,000 | 14.1% | 123,000 | 14.3% |



3.2 Number of 18-24 year olds NEET

| Region | Year (Quarter 1) | | | | | | | |
|---------|------------------|-------|---------|-------|---------|-------|---------|-------|
| | 2009 | | 2010 | | 2011 | | 2012 | |
| | Volume | % | Volume | % | Volume | % | Volume | % |
| England | 831,000 | 17.6% | 844,000 | 17.7% | 865,000 | 18.1% | 843,000 | 17.6% |
| London | 99,000 | 14.4% | 92,000 | 13.5% | 112,000 | 16.1% | 114,000 | 16.4% |

3.3 Number of 19-24 year olds NEET

| Region | Year (Quarter 1) | | | | | | | |
|---------|------------------|-------|---------|-------|---------|-------|---------|-------|
| | 2009 | | 2010 | | 2011 | | 2012 | |
| | Volume | % | Volume | % | Volume | % | Volume | % |
| England | 725,000 | 17.7% | 766,000 | 18.6% | 780,000 | 18.8% | 757,000 | 18.2% |
| London | 89,000 | 14.5% | 83,000 | 13.6% | 99,000 | 16.0% | 102,000 | 16.4% |

4 Participation in education, training and employment by 16 to 18 year olds in England, end 2011 (SFR12/2012)

In February the DfE revised the national participation figures originally released in June 2012. The revision is due to the Office for National Statistics (ONS) revising their mid-year population estimates following the 2011 Census.

The impact of the revisions to the headline estimates of participation at end 2011 are detailed in the table below. The changes are driven almost entirely by the higher estimates of the 16-18 population published by ONS.

4.1 Participation in education, training and employment by 16 to 18 year olds in England, end 2011

| | 16 | | 17 | | 16/17 | |
|---------------|----------------|-----------------|----------------|-----------------|----------------|-----------------|
| | <i>Revised</i> | <i>Original</i> | <i>Revised</i> | <i>Original</i> | <i>Revised</i> | <i>Original</i> |
| London | 91% | 103% | 86% | 97% | 88% | 98% |

The figures clearly indicate lower than previously reported participation. However, the revision corrects the London anomaly of reporting over 100% participation for 16 year olds and brings the figures more closely into line with those reported through NCCIS. The key regional statistics are set out below.

4.2 Participation in education, training and employment by 16 to 18 year olds in England, end 2011

| | 16 | 17 | 16/17 |
|--------------------|------------|------------|--------------|
| North East | 92% | 84 | 88% |
| North West | 92% | 85 | 89% |
| Yorkshire & Humber | 92% | 83 | 88% |
| East Midlands | 89% | 82 | 85% |
| West Midlands | 91% | 83 | 87% |
| East of England | 91% | 83 | 87% |
| London | 91% | 86% | 88% |
| South East | 91% | 85 | 88% |
| South West | 94% | 86 | 90% |
| England | 91% | 84 | 88% |