

Operational Sub-Group (OSG)

Latest participation, NEET and 'not known' statistics

Item no: 3(b)

Date: 19 April 2013

Contact: Glyn Parry

Telephone: 020 7934 9730

Email: glyn.parry@londoncouncils.gov.uk

1 16 - 18 Academic Age Summary (January 2013 – latest available from [NCCIS](#)¹)

The latest not in education, employment or training (NEET) percentage for London is 4.7% (a 0.3% decrease on the previous month), which is below the national average of 5.7%. The current percentage of young people whose participation status is 'not known' is 9.7% which is higher than the national average (by 1%) (see 1.1).

The three month average comparison between 2012/13 and 2011/12 shows a marginal decline in performance for London in relation to NEET, but an improvement in performance in terms of not known figures (see 1.2 and 1.3). The percentage of 16-18 year olds who are NEET and not known varies significantly by borough, ranging from less than 2% to over 10% and 1% to over 37% respectively (excluding the City of London) (see 1.4 and 1.5).

1.1 Volume and percentage of 16-18 year olds who are participating in education, employment or training (EET), not in education, employment or training (NEET) and 'not known'

Region	Adjusted EET	Adjusted NEET	% NEET	16-18s not known	% 16-18s not known
England	1,562,431	94,960	5.7%	152,867	8.7%
London	222,362	11,079	4.7%	24,250	9.7%

1.2 Percentage of 16-18 year olds who are NEET for the past three months for 2012/13 and 2011/12²

Region	2012-13				2011-12			
	Nov-12	Dec-12	Jan-13	Ave	Nov-11	Dec-11	Jan-12	Ave
England	5.8%	5.8%	5.7%	5.8%	6.2%	6.1%	6.1%	6.1%
London	4.4%	5.0%	4.7%	4.7%	4.7%	4.4%	4.4%	4.5%

1.3 Percentage of 16-18 year olds whose participation status is 'not known' for the past three months for 2012/13 and 2011/12³

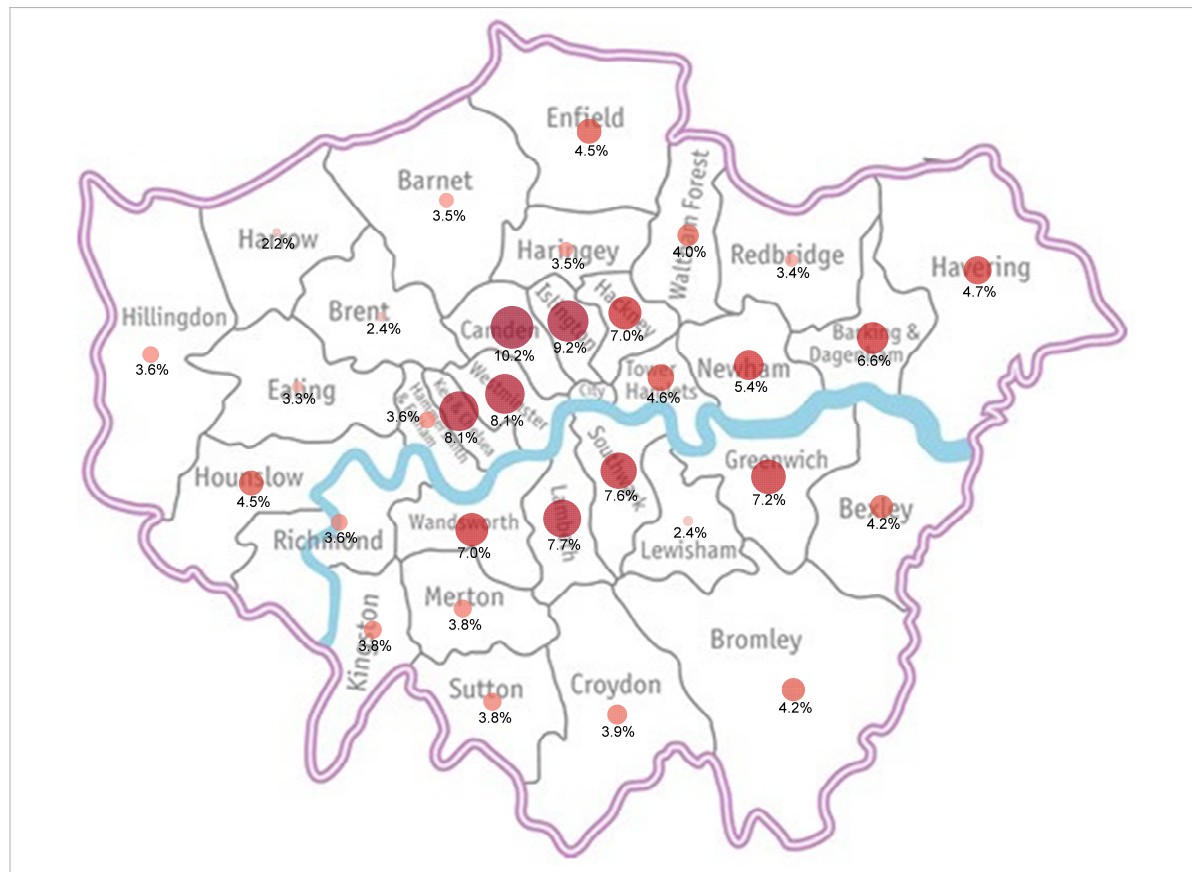
Region	2012-13				2011-12			
	Nov-12	Dec-12	Jan-13	Ave	Nov-11	Dec-11	Jan-12	Ave
England	13.1%	10.6%	8.7%	10.8%	10.7%	9.4%	8.0%	9.4%
London	13.6%	11.6%	9.7%	11.6%	17.0%	13.7%	10.6%	13.7%

¹ The [National Client Caseload Information System](#) (NCCIS) is a gateway for local authorities to access and submit performance data and information to the Department for Education regarding the participation of 16-18 year olds in education, employment and training.

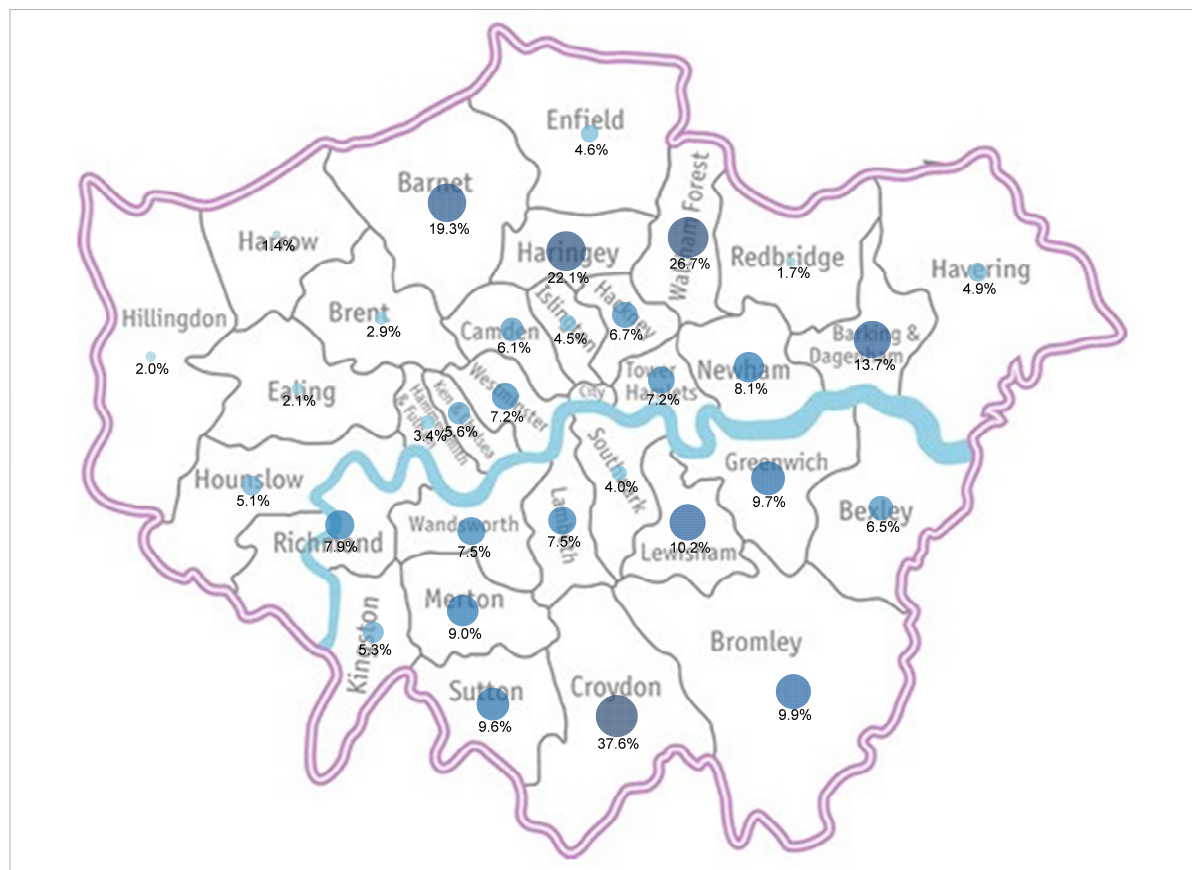
² The three month average is the national measure for NEET used by the Department for Education.

³ The three month average is the national measure for NEET used by the Department for Education.

1.4 16-18 year olds NEET by London Borough



1.5 16-18 year olds 'not known' by London Borough



2 16 – 17 Participation in Education and Training (June 2012 – latest available from [Department for Education website](#)⁴)

On 3 October the Department for Education (DfE) published 16 and 17 year old participation data that highlights where participation is rising, static or falling. The data also provides a break down of participation by type of establishment, age, gender and ethnic group.

London's participation in 2012 is 89.6% and has improved by 1.4% on 2011 participation levels; London's participation is also 2.3% above the national figure (see 2.1). The majority of 16 and 17 year olds in London (87.3%) are participating in full time education and training which is 5.6% higher than the national figure, although a lesser proportion are participating in Apprenticeships and employment with training than nationally (see 2.2). The percentage participating at 16 in London is higher than those participating at 17 by 4.4%, and participation levels are higher amongst girls (see 2.3).

2.1 Participation percentage over time⁵

Region	Jun 2011	Dec 2011	Mar 2012	Jun 2012	%pt change in last 12 months
England	86.5%	87.8%	87.7%	87.3%	0.8% ➡
London	88.2%	86.1%	88.8%	89.6%	1.4% ⬆

2.2 Participation percentage by type of activity

Region	Proportion of 16 and 17 year olds recorded as participating in:				
	Full time education and training	Apprenticeship	Employment with training	Other	Total
England	81.7%	3.8%	1.1%	0.7%	87.3%
London	87.3%	1.8%	0.2%	0.3%	89.6%

2.3 Participation percentage by age and gender

Region	% 16 year olds recorded as participating in education or training			% 17 year olds recorded as participating in education or training		
	Female	Male	Total	Female	Male	Total
England	91.8%	89.6%	90.7%	84.6%	81.7%	84.0%
London	92.8%	90.8%	91.8%	88.9%	85.9%	87.4%

3 16-24 Quarterly Brief Summary (February 2013, Quarter 4 – latest available from the [Department for Education Statistical First Release](#))⁶

Both the volume and percentage of 16-24 year olds who are NEET in Quarter 4 of 2012 in London have decreased since Quarter 3 of 2012 (NEET levels historically peak at Quarter 3), but are higher than the figures in the same quarter last year (see 3.1 table).

⁴ The Department for Education (DfE) uses information from the Client Caseload Information System to estimate the number and proportion of young people participating in different types of education and training in each local authority area. The figures are intended to support local authorities to track their participation performance and their progression to achieving their Raising the Participation Age (RPA) goals.

⁵ Times series used in this table is determined by the Department for Education and represents a 12 month period.

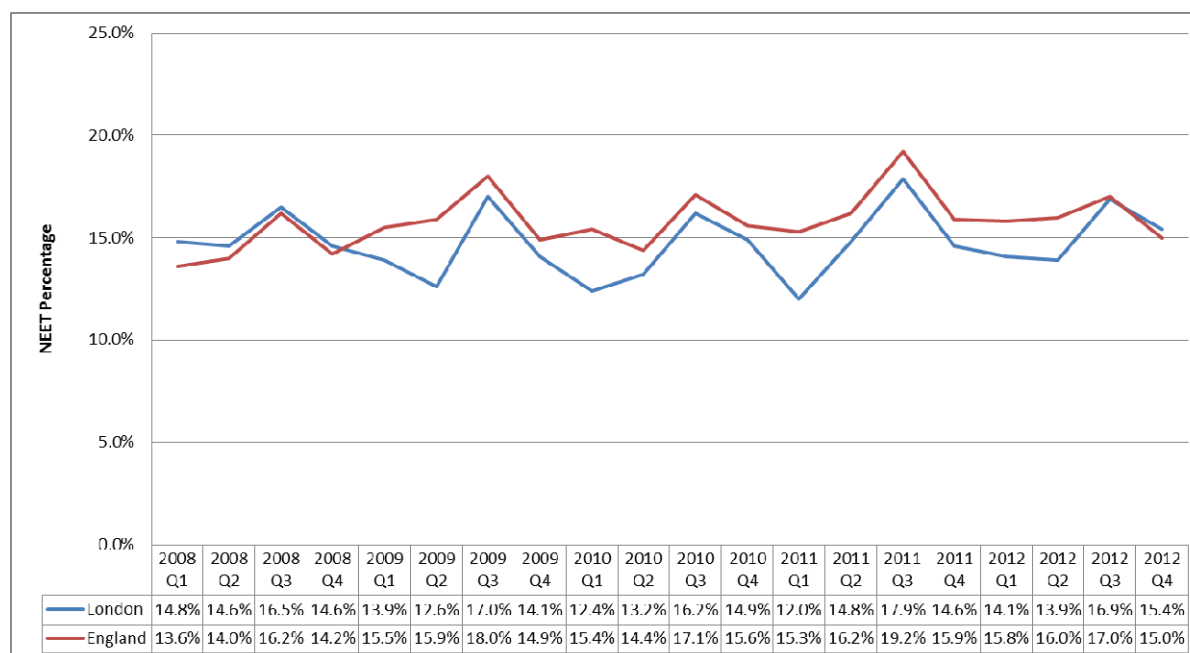
⁶ The 16-24 Quarterly Brief Summary combines the latest 16-18 NEET statistics with the [Labour Force Survey](#) to create a profile of the NEET 16-24 age group.

The London NEET percentage is now above the national figure by 0.4%, which has been historically below the national average since early 2009. The most recent data potentially indicates a NEET trend in London that is more closely aligned with national NEET levels (see 3.1 line graph).

The volume and percentage of 18-24 year olds and 19-24 year olds who are NEET in Quarter 4 of 2012 in London has decreased since Quarter 2 of 2012. However, the NEET percentage and volume for both age groups increased when compared to the same quarter the year before. Both the London NEET rate for 18-24 and 19-24 year olds are above the national average by 0.3% and 0.4% respectively which suggested that it is NEET levels amongst these ages groups (as opposed to 16-18 year olds) that has increased overall London NEET levels to above the national average (see 3.2 and 3.3).

3.1 Number of 16-24 year olds NEET

Region	Year (Quarter 4)							
	2009		2010		2011		2012	
	Volume	%	Volume	%	Volume	%	Volume	%
England	893,000	14.9%	937,000	15.6%	957,000	15.9%	893,000	15.0%
London	119,000	14.0%	124,000	14.9%	123,000	14.5%	132,000	15.4%



3.2 Number of 18-24 year olds NEET

Region	Year (Quarter 4)							
	2009		2010		2011		2012	
	Volume	%	Volume	%	Volume	%	Volume	%
England	810,000	17.1%	864,000	18.2%	872,000	18.2%	831,000	17.5%
London	112,000	16.3%	117,000	17.1%	116,000	16.7%	125,000	17.8%

3.3 Number of 19-24 year olds NEET

Region	Year (Quarter 4)							
	2009		2010		2011		2012	
	Volume	%	Volume	%	Volume	%	Volume	%
England	716,000	17.5%	774,000	18.8%	780,000	18.7%	739,000	17.9%
London	105,000	17.2%	109,000	17.8%	103,000	16.6%	113,000	18.3%

4 Participation in education, training and employment by 16 to 18 year olds in England, end 2011 (SFR12/2012)

In February the DfE revised the national participation figures originally released in June 2012. The revision is due to the Office for National Statistics (ONS) revising their mid-year population estimates following the 2011 Census.

The impact of the revisions to the headline estimates of participation at end 2011 are detailed in the table below. The changes are driven almost entirely by the higher estimates of the 16-18 population published by ONS.

4.1 Participation in education, training and employment by 16 to 18 year olds in England, end 2011

	16		17		16/17	
	<i>Revised</i>	<i>Original</i>	<i>Revised</i>	<i>Original</i>	<i>Revised</i>	<i>Original</i>
London	91%	103%	86%	97%	88%	98%

The figures clearly indicate lower than previously reported participation. However, the revision corrects the London anomaly of reporting over 100% participation for 16 year olds and brings the figures more closely into line with those reported through NCCIS. The key regional statistics are set out below.

4.2 Participation in education, training and employment by 16 to 18 year olds in England, end 2011

	16	17	16/17
North East	92%	84	88%
North West	92%	85	89%
Yorkshire & Humber	92%	83	88%
East Midlands	89%	82	85%
West Midlands	91%	83	87%
East of England	91%	83	87%
London	91%	86%	88%
South East	91%	85	88%
South West	94%	86	90%
England	91%	84	88%