

Young People's Education and Skills

Operational Sub-Group

Latest participation, NEET and 'not known' statistics

Item no: 4

Date: 21 September 2012

Contact: Glyn Parry

Telephone: 020 7934 9730

Email: glyn.parry@londoncouncils.gov.uk

1 16-18 Academic Age Summary (July 2012 – latest available from [NCCIS](#)¹)

The latest not in education, employment or training (NEET) percentage for London is 4.6% (a 0.1% increase on the previous month), which is below the national average of 6.3%. The current percentage of young people whose participation status is 'not known' is 7.9% which is 3.1% lower than the national average (a reversal of previous performance this year) (see 1.1).

The three month average comparison between 2011/12 and 2010/11 shows improved performance for London in relation to both NEET and not known figures (see 1.3). The percentage of 16-18 year olds who are NEET varies significant by borough, ranging from less than 3% to over 8% (excluding the City of London) (see 1.4).

1.1 Volume and percentage of 16-18 year olds who are participating in education, employment or training (EET), not in education, employment or training (NEET) and 'not known'

Region	Adjusted EET	Adjusted NEET	% NEET	16-18s not known	% 16-18s not known
England	1,531,130	102,391	6.3%	192,326	11.0%
London	215,646	10,288	4.6%	18,527	7.9%

1.2 Percentage of 16-18 year olds who are NEET for the past three months for 2012/13 and 2011/12²

Region	2012-13				2011-12			
	May-12	Jun-12	Jul-12	Ave	May-11	Jun-11	Jul-11	Ave
England	5.9%	5.9%	6.3%	6.0%	6.9%	6.9%	6.5%	6.5%
London	4.6%	4.5%	4.6%	4.5%	6.0%	5.7%	5.3%	5.4%

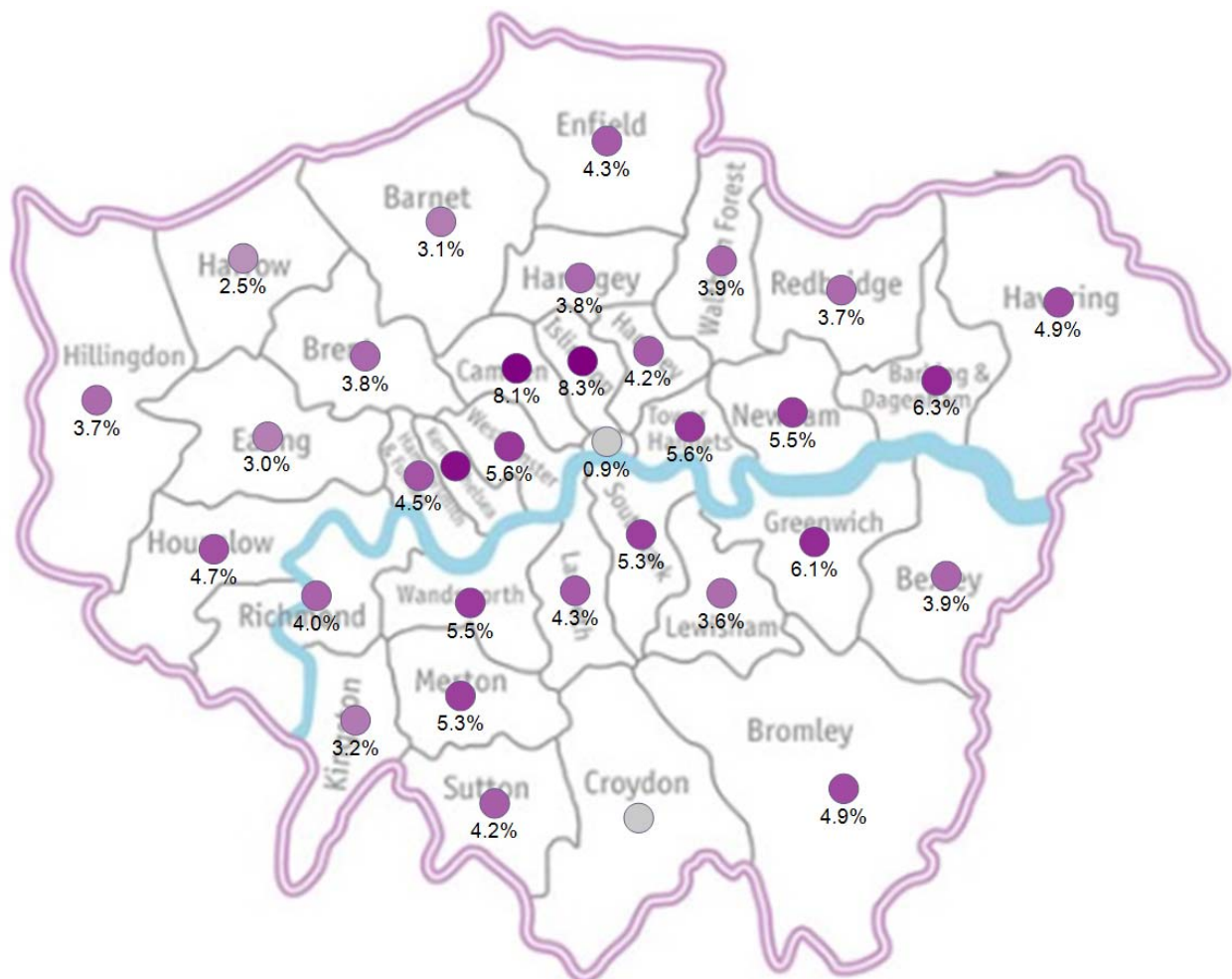
¹ The [National Client Caseload Information System](#) (NCCIS) is a gateway for Local Authorities to access and submit performance data and information to the Department for Education regarding the participation of 16-18 year olds in education, employment and training.

² The three month average November to January is the national measure for NEET used by the Department for Education.

1.3 Percentage of 16-18 year olds whose participation status is 'not known' for the past three months for 2012/13 and 2011/12³

Region	2012-13				2011-12			
	May-12	Jun-12	Jul-12	Ave	May-11	Jun-11	Jul-11	Ave
England	8.9%	8.9%	10.9%	9.6%	8.6%	8.7%	8.5%	8.6%
London	9.7%	8.3%	7.9%	8.6%	13.1%	11.6%	10.7%	11.7%

1.4 16-18 year olds NEET by London Borough⁴



³ As above.

⁴ No NEET data present for the London Borough of Croydon on NCCIS.

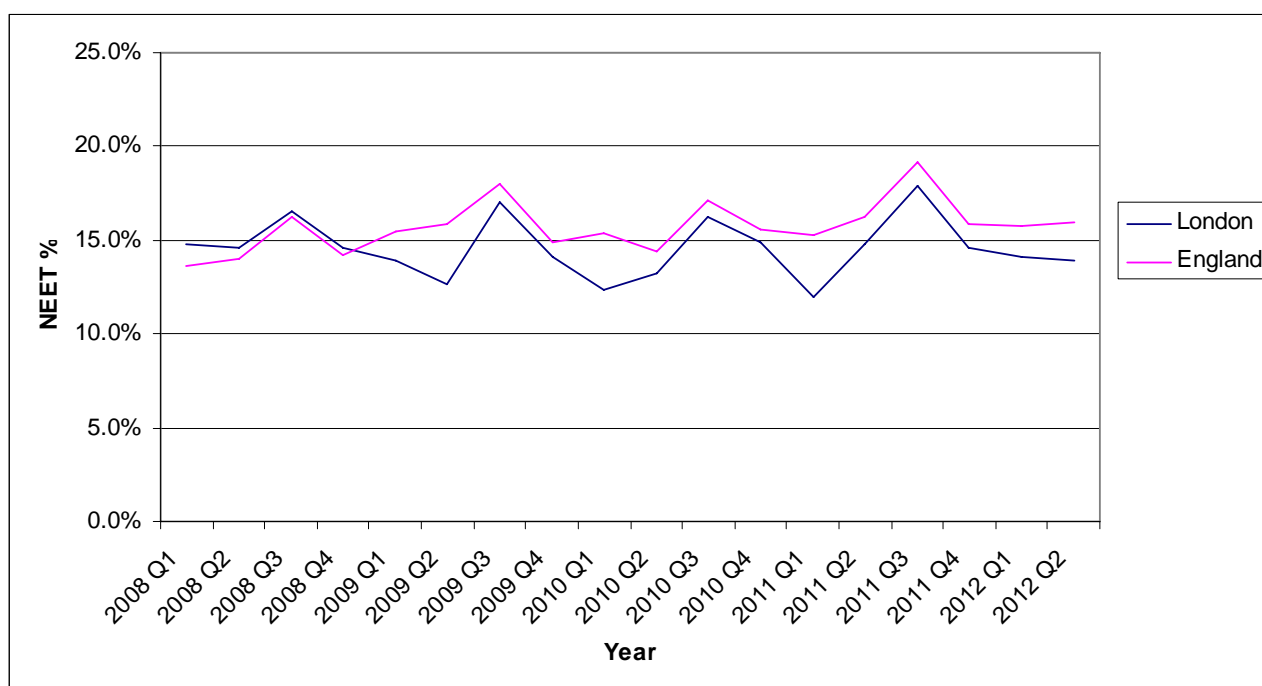
2 16-24 Quarterly Brief Summary (August 2012, Quarter 2 – latest available from the [Department for Education Statistical First Release](#))⁵

Both the volume and percentage of 16-24 year olds who are NEET in Quarter 2 of 2012 in London has continued to fall since Quarter 1 of 2012 and is an improvement on the position in the same quarter last year (see 2.1 table). The London NEET percentage also remains below the national figure (by 2.1%). The London 16-24 NEET percentage has been historically below the national average since early 2009, and the most recent data indicates a greater divergence developing between NEET levels in London and across the country (see 2.1 line graph).

The volume and percentage of 18-24 year olds and 19-24 year olds who are NEET in Quarter 2 of 2012 in London has also decreased. In Quarter 2 of 2012, the NEET percentage for both age groups decreased by approximately 1% (to 15.5% and 15.9% respectively) when compared to the same quarter the year before. The London NEET rate for these age groups both remain below the national average, by nearly 3% (see 2.2 and 2.3).

2.1 Number of 16-24 year olds NEET

Region	Year (Quarter 2)							
	2009		2010		2011		2012	
	Volume	%	Volume	%	Volume	%	Volume	%
England	954,000	15.9%	868,000	14.4%	979,000	16.2%	968,000	16.0%
London	112,000	12.6%	114,000	13.2%	128,000	14.8%	123,000	13.9%



⁵ The 16-24 Quarterly Brief Summary combines the latest 16-18 NEET statistics with the [Labour Force Survey](#) to create a profile of the NEET 16-24 age group.

2.2 Number of 18-24 year olds NEET

Region	Year (Quarter 2)							
	2009		2010		2011		2012	
	Volume	%	Volume	%	Volume	%	Volume	%
England	829,000	17.6%	770,000	16.2%	884,000	18.4%	875,000	18.1%
London	105,000	14.5%	101,000	14.0%	118,000	16.6%	112,000	15.5%

2.3 Number of 19-24 year olds NEET

Region	Year (Quarter 2)							
	2009		2010		2011		2012	
	Volume	%	Volume	%	Volume	%	Volume	%
England	719,000	17.8%	671,000	16.4%	793,000	19.1%	778,000	18.5%
London	90,000	14.0%	89,000	14.2%	108,000	16.9%	104,000	15.9%