

Climate Programmes Showcase

London Climate Action Week



Be the solution to climate change

**LONDON
COUNCILS**

Retrofit London



Be the solution to climate change



Ambitious programme

- Make all domestic buildings greener and warmer by getting them to an average level of EPC B (or equivalent) by 2030.
- Range of measures including fabric improvements, heat decarbonisation and renewable energy.
- 3.8m homes in London with multiple archetypes and tenures.
- £49bn estimated cost to deliver.

Be the solution to climate change



Strong foundations

- Pan London programme with political support from all London local authorities.
- Leadership from Housing Directors and close engagement with GLA and London Councils.
- Housing Action Plan with 19 action areas.
- Governance structures in place.
- Funding secured for delivery team.
- Implementation Plan being delivered..

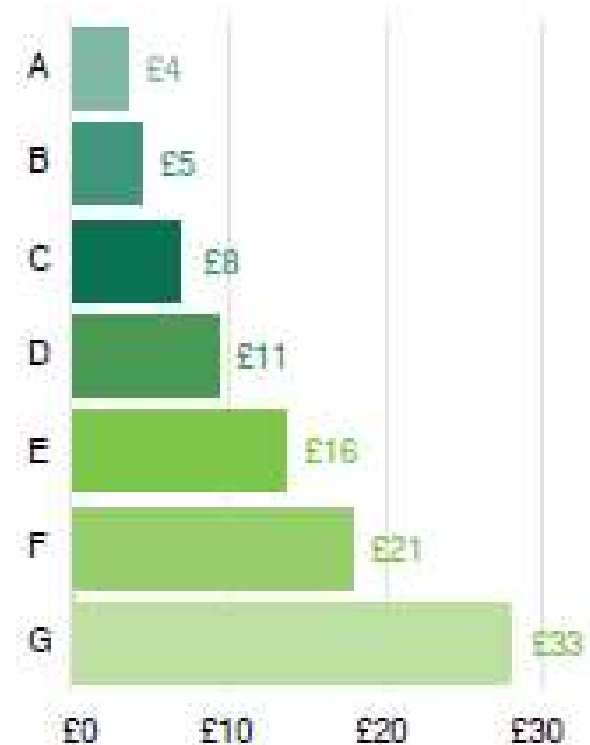
Be the solution to climate change



Lots of opportunities

- Cost of living crisis.
- Data and knowledge sharing.
- Growth in skills and sector capacity
- Finance and funding models.
- Influencing and lobbying.
- Procurement at scale.
- Resident engagement.

Running cost per square metre



Be the solution to climate change



For more information:

<https://www.londoncouncils.gov.uk/our-key-themes/climate-change/retrofit-london-housing-action-plan>

Contact:

dominic.millen@enfield.gov.uk

James.McHugh@walthamforest.gov.uk

Be the solution to climate change



Low carbon development



Be the solution to climate change

 **Hackney**

**LONDON
COUNCILS** 

Low Carbon Development Action Plan

Secure low carbon buildings and infrastructure via borough planning by 2030



Climate Programmes Showcase 1.7.2022

Natalie Broughton - Head of Planning and Building Control

Be the solution to climate change



The focus of the programme



CO² - Rebalance onsite delivery over off-site payments



Call for stronger CO² regulations



Adopt objectives of Circular Economy - reuse and recycle



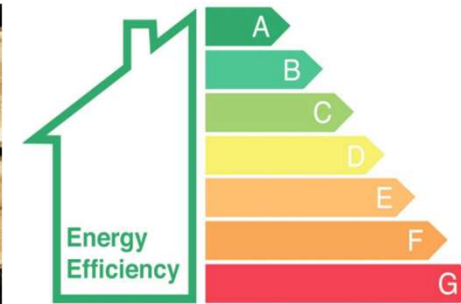
Encourage Renewable Energy through policy



Assume passive design principles



Support Sustainable materials



Ensure higher energy performance

Be the solution to climate change



How are we getting to low carbon buildings?

1. Collaborate (on plan making and guidance)

- Agreed definition of 'true zero carbon' that goes beyond current requirements - April 2022
- Identify best practice around low carbon and zero carbon development - June 2022
- Finalise clear evidence base requirements for a Low Carbon Development Policy - June 2022

2. Innovate

- Commission research for gaps identified in June around viability and sustainable technology - September 2022
- Unlock the blockers between policy, building control, conservation areas - March 2023

3. Strengthen (delivery)

- Lobby for clarity on Carbon Offset Funds/Levelling Up Bill - July 2022
- Establish PIs to monitor effectiveness of low carbon policies - October 2022

4. Upskill

- Complete review of options for improving Local Authority skills and training - July 2022



Asks

- 1) A commitment from all London boroughs that all new and existing evidence relating to climate change is open source. Sharing knowledge and resources is key to meeting our objectives.
- 2) Get Involved - continue to share your ideas and exemplar emerging policy and developments with us. Each borough has something unique to offer.
- 3) Tell us your views on the skills needed? We know that many boroughs are carrying out their own skills audit and we'd be keen to hear your findings.

Get in touch:

natalie.broughton@hackney.gov.uk

rachel.weaver@hackney.gov.uk



Be the solution to climate change

Low carbon transport



Be the solution to climate change



City of
Westminster



THE ROYAL BOROUGH OF
KINGSTON
UPON THAMES

LONDON
COUNCILS

Vision

Halve road journeys made by petrol and diesel and encourage sustainable and active travel options

Sarah Ireland, Executive Director, RB Kingston

Be the solution to climate change



City of
Westminster

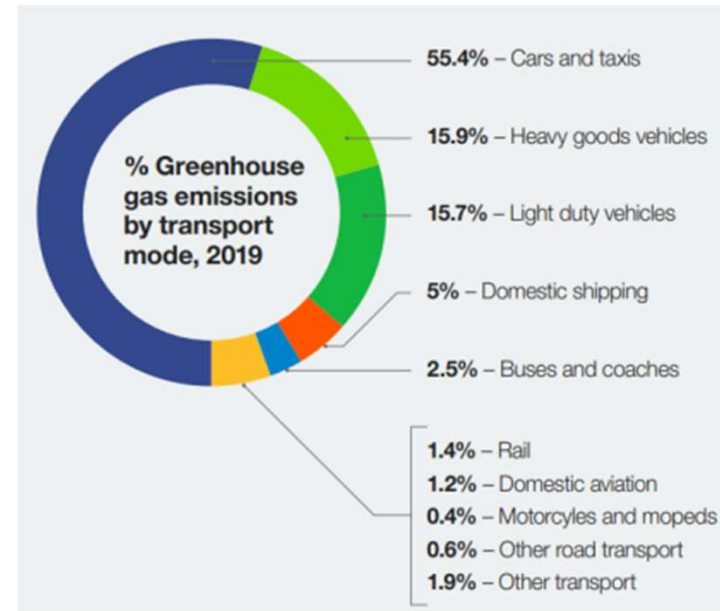


THE ROYAL BOROUGH OF
KINGSTON
UPON THAMES

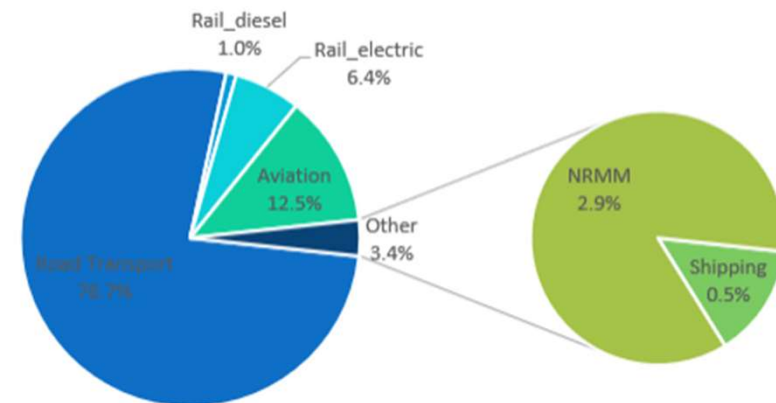


Why is this important?

- **25% of London's CO2 emissions are from the transport sector**
- **c37% of trips in London are made by car or motorbike. Around a third of these are less than 2km.**
- **Traffic is major source of PM2.5 and NO2 air pollution, contributing significantly to 4,000 air-quality related deaths in London every year**



Transport CO₂e, 2018



Be the solution to climate change



City of Westminster



THE ROYAL BOROUGH OF KINGSTON UPON THAMES



What we're doing about it

- Creating data framework to **track transport emissions, model decarbonisation pathways and align action across London**
- Exploring how **borough levers** (parking, road management) can support transport decarbonisation
- Supporting **active travel & electrification** and encouraging sustainable choices
- Decarbonising **freight, business travel, and transport infrastructure** schemes
- Recognising **different boroughs need different balance of solutions** - geography, politics, economy etc

Avoid unnecessary travel

- Home working
- Digital infrastructure
- Freight consolidation

Shift to more sustainable transport

- Active Travel
- Public transport
- Micromobility

Improve efficiency of transport

- Parking policy
- Emission Zones
- Road user charging
- Electrification
- Sustainable Freight
- Efficient car use (car sharing, car clubs etc)

Be the solution to climate change



City of
Westminster



THE ROYAL BOROUGH OF
KINGSTON
UPON THAMES

LONDON
COUNCILS

Next Steps

Established working groups to develop discussion papers on key issues (**more members wanted! - open to all local authority/public sector officers**)

- **Data (measuring our impact)**
- **EVs**
- **Freight**
- **Active travel**
- **Public transport**
- **Construction & highway asset management**
- **Parking & kerbside management**
- **Demand management, low and zero emission zones**
- **Working with Education sector**
- **Working with Health sector**
- **Advocacy**
- **Skills**
- **Equalities and transport justice**

Get involved, contact helen.treasure@kingston.gov.uk
(we are particularly keen to hear from colleagues for those highlighted in blue above)

Be the solution to climate change



Timeline

14 June, Kick Off at Project Reference Group

Drafting work commences

8 September, Project Reference Group (update report)

13 October, Climate Oversight Group - Draft review

8 December, Transport & Environment Committee - provision of draft final papers for comment



Renewable power for London



Be the solution to climate change



Introduction

- Ambition is to ‘**secure 100% Renewable Power for London’s public sector now and in the future**’. With this ambition running until 2030 and split into three workstreams.

Energy Procurement

- Vision: *Buy 100% renewable power in collaboration*
- Objective: *To procure public sector energy for ourselves and our residents that is 100% renewable through collaboration*

Decentralised Energy

- Vision: *Supply renewable power through innovative energy generation and storage projects*
- Objective: *To maximise local innovative energy generation and storage projects to meet zero carbon energy demand*

Energy Advice

- Vision: *Support Londoners to source 100% renewable power, reduce consumption and save money*
- Objective: *To support and influence residents, to reduce energy consumption, move to renewables and save money*



Action Plan Activities

Energy Procurement

- Assess the current procurement position across the capital including broader public sector family e.g NHS.
- Establish position on carbon reporting.
- Investigate collaborative routes to market.
- Conduct collaborative procurement / investment exercises for renewable power for groups of London authorities.

Decentralised Energy

- Assess the current London wide picture of decentralised energy projects and pipeline schemes.
- Publish London wide report on Decentralised Energy opportunities based on a potential sub-regional model.
- Support the feasibility of development of a North London Heat and Power Network.
- Use the ultra-low 5th generation heat network through the GreenSCIES project in Islington as a case study for London
- West London Local Area Energy Plan?

Energy Advice

- Investigate and evaluate the current energy advice model across the capital with delivery partners, GLA and other stakeholders and publish recommendations.



Initial findings/learnings

Energy Procurement

- Boroughs spending an estimated ¼ £billion on energy.
- Only one known borough has a power purchase agreement with a renewable energy generator.

Decentralised Energy

- Boroughs grappling with what to do in the here and now as well as longer term strategic planning i.e. Local Area Energy Plans.

Energy Advice

- Variety of different actors giving energy advice: central government, boroughs, housing associations, charities i.e. citizens advice, age UK.



One world living



Be the solution to climate change



One World Living Programme

Aims to reduce consumption emissions across London, focussing on the categories of **food, textiles, plastics & electricals**.

The provisional target is to achieve a **2/3 reduction in emissions** across these areas by 2030 (Leeds Data for 2018 shows eg Harrow's average per capita emissions of 8.6tCO₂e tonnes, IGES in 2019 estimated that cities would need to reach 2.5tCO₂e per capita by 2030 to stay within 1.5 °C – a reduction of 71%)

Harrow, assisted by **West London Waste Authority** and **ReLondon**, providing overall programme coordination

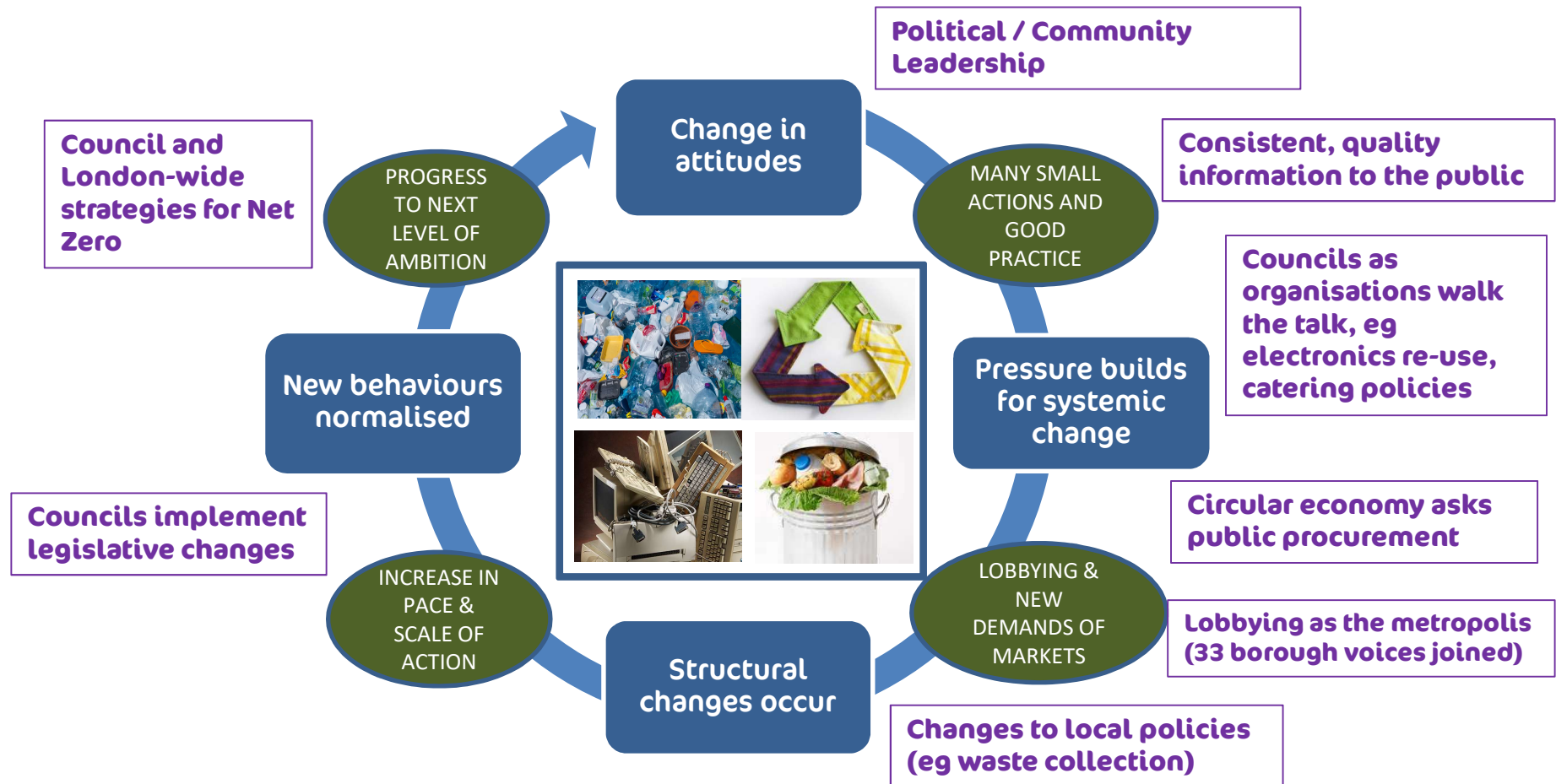
Theme working groups being lead by **Hackney** (Food), **Hammersmith & Fulham** (Electricals), **WLWA** working with **Wandsworth** (Textiles) and **Richmond** (Plastics)

One World Living - Reducing London's Consumption Emissions

Be the solution to climate change



Bottom up action can build a virtuous circle of change



EXAMPLE LOCAL AUTHORITY POINTS OF LEVERAGE

Be the solution to climate change



ELECTRICALS

Vision: To slow and close the loop of device lifecycles. This means (in priority order):

- **Caring for our electricals for longer** and slowing their replacement, thereby reducing the emissions and other environmental harms associated with manufacturing new devices. The foremost way to achieve this is by understanding the impact of our devices, and ensuring repair, not replacement, is the first port of call.
- **Giving unwanted devices a second life** wherever possible through refurbishment and donation or sale, helping to bridge the digital divide in the process.
- **Sharing devices** between people that would otherwise be only rarely used.
- **Recycling all devices** at the end of their useable life, at the highest possible value of their components, to be made into new devices.

FOOD

Vision: Londoners will be at the heart of the change in our food system:

- they will demand **food sourced from equitable and agro-ecological local networks;**
- they will **discover new diverse tastes that are climate friendly;**
- they will **normalise sharing food** amongst people and businesses, whilst **recovering inedible food into a valuable natural resource.**

TEXTILES

Vision: Londoners are making informed decisions on the textiles items they purchase, including:

- the **types of materials** purchased and the length of the supply chains;
- only consuming sustainably, and **knowing how to fully care for the items** from washing to repair will support this reduction.
- Once an item is no longer wanted or is **at the end of its life**, residents know what their options are and **no textiles end up in the bin.**

PLASTICS

Vision: Londoners are living differently and:

- **Refill** is the norm and is accessible at all price points for all consumers. Londoners use 'tiffin boxes' at lunch and when on the go, supported by a London-wide scheme
- The narrative around plastic has changed – it is seen as a **limited and precious resource** that we cannot produce any more of. It is unthinkable to throw it away
- Our rivers and streets are **free of plastic litter** and all plastics in use are **reusable, recycled, or compostable**

Good Practice Resources for Local Authorities



Vision

We will slow and close the loop of device lifecycles through caring for our electricals for longer, giving unwanted devices a second life, sharing little-used devices, and recycling all devices when no longer reusable.

Key Facts

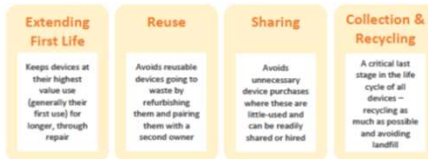
We spend **£3.3bn** on electricals per year

An estimated **273,000** tonnes of devices

Embodied emissions from these account for around **138kg** of CO₂e per person in the UK

or **1.3%** of an individual's footprint

Theme Pillar



Priority Areas for the next 1-2 year

- Extend and maintain the Repair Directory at a London level
- Support repair cafes and restart parties
- Promote buying refurbished devices to residents
- Promote existing sharing and hiring platforms
- Establish accessible, trusted and secure locations for drop-off (computers and smartphones)
- Broadcast the Recycle Your Electricals campaign

Key Messages for London Boroughs

- These actions reduce embodied emissions. Energy efficiency is also important but is less significant for personal smart devices, and is addressed by national standards.
- Smart devices (phones, computers, tablets) have the greatest embodied carbon impact. The action plan focuses on these, as well as solutions for other small and medium-sized electricals.



Extending the first life of a device offers the greatest carbon reduction, as it delays the purchase of a new device.

- This is followed by giving devices a second life through refurbishment and reuse, which can displace new purchases. Some device donations that tackle digital exclusion may bring devices to those who would not otherwise have them however, rather than displacing a purchase.
- Sharing of electricals is an underexploited opportunity for seldom-used items. Sharing is appropriate for a smaller but still meaningful number of electrical products.
- All electrical items should eventually be recycled, and appropriate disposal made easy.

Actions for London Boroughs

Actions to take now

- Let us know which of the priority areas above you are already progressing, or can get involved in.
 - Electrical repair community groups
 - Device refurbishment organisations
 - Promote the repair, reuse and sharing resources below to your residents, businesses and colleagues.
 - Join the London-wide [Recycle Your Electricals](#) campaign in September, with free campaign resources.
 - Donate old corporate devices via the [National Device Bank](#) or local refurbishment organisations (see the lists from [Restart](#) and [GIA](#)).

Actions to take over the next 2 years

- Review your IT and electricals procurement. Consider:
 - Purchasing refurbished devices
 - Contracts for longevity e.g. product-as-a-service with ongoing supplier responsibility for maintenance; strategies for devices to be modular and upgraded
 - Evidence of reduced materials, increased recycled content, and lower embodied carbon.
 - Use of lean manufacturing and installation techniques.
 - Strategy for reuse, refurbishment, recycling, and supplier take-back schemes by the supplier to ensure proper end of life treatment
 - Energy efficiency
- Support electrical repair community groups in your borough.
 - [Food groups](#) affiliated with Restart, or others operating independently.
 - Key opportunities for support can include:
 - Identifying local volunteers with repair skills
 - Promoting events
 - Help with space hire (normally needed once per month or less)
 - Set-up costs (c. £1,500 per group)
 - Coordinating costs (c. £5,000 per year)
- (South and southeast London boroughs) Join north, east and west London in supporting the expansion of the [Repair directory](#). Discuss funding its expansion with your local waste partnership, partner borough, and Restart.
- Set up reuse collection points for smart devices.
- Partner with local or national refurbishment organisations to regularly collect laptops, tablets and smartphones from community sites such as libraries.



Support & Resources Available for Boroughs

The list below includes existing platforms and resources that boroughs can promote to residents or use themselves. Please note: options listed below have been recommended based on research for the OWL programme, but are not quality assured by the programme. Boroughs should undertake the usual due diligence when proceeding with them, and alternatives may be available.

Extending first life

- [Repair directory](#) – map of London electrical repair businesses that exceed minimum warranty periods and positive reviews.
- [Restart parties](#) – electrical repair community groups where residents can volunteer or bring their devices for fixing
- [Fixit](#) – self-repair guides and repairability ratings for a wide range of device models

Reuse:

- Options for buying refurbished devices:
 - For individuals: [Backmarket](#) – platform offering minimum 12-month warranties, 30-day return period, and quality assurance of sellers
 - For schools, charities, and SMEs: [Reconomia](#) – business selling low-cost donated and refurbished devices in bulk to schools, charities and SMEs
 - For boroughs, businesses and individuals: Purchase direct from manufacturers. Many IT companies now sell their refurbished devices directly, including Dell, HP and Lenovo.
- Where to donate devices:
 - [GIA](#) list of London-based schemes (donations from individuals or organisations)
 - [Restart](#) list of London and national schemes (donations from individuals or organisations)
 - [National Device Bank](#) (donations from organisations only)
 - [Reconomia](#) (donations from organisations only) - business selling low-cost refurbished devices to schools, charities and SMEs

Sharing:

- [Library of Things](#) – growing network of 'libraries' for hiring electrical and other items
- [Trotter](#) – online platform for hiring devices
- [Sharebase](#) – peer-to-peer hiring platform
- [Trovebank](#) – peer-to-peer lending platform

Collection and recycling:

- [Recycle Your Electricals](#) – map of reuse and recycling options, and electrical campaign materials

Get in Touch!

Jim Cunningham, Climate Policy & Strategy Lead
Hammersmith & Fulham Council
Jim.Cunningham@hfh.gov.uk

One World Living - Reducing London's Consumption Emissions

Be the solution to climate change



Building the green economy



Be the solution to climate change

**ONE
HOUNSLOW**



**London Borough
of Hounslow**

**LONDON
COUNCILS**

Building a Green Economy

Creating a Just Transition



Be the solution to climate change

**ONE
HOUNSLOW**



London Borough
of Hounslow

**LONDON
COUNCILS**

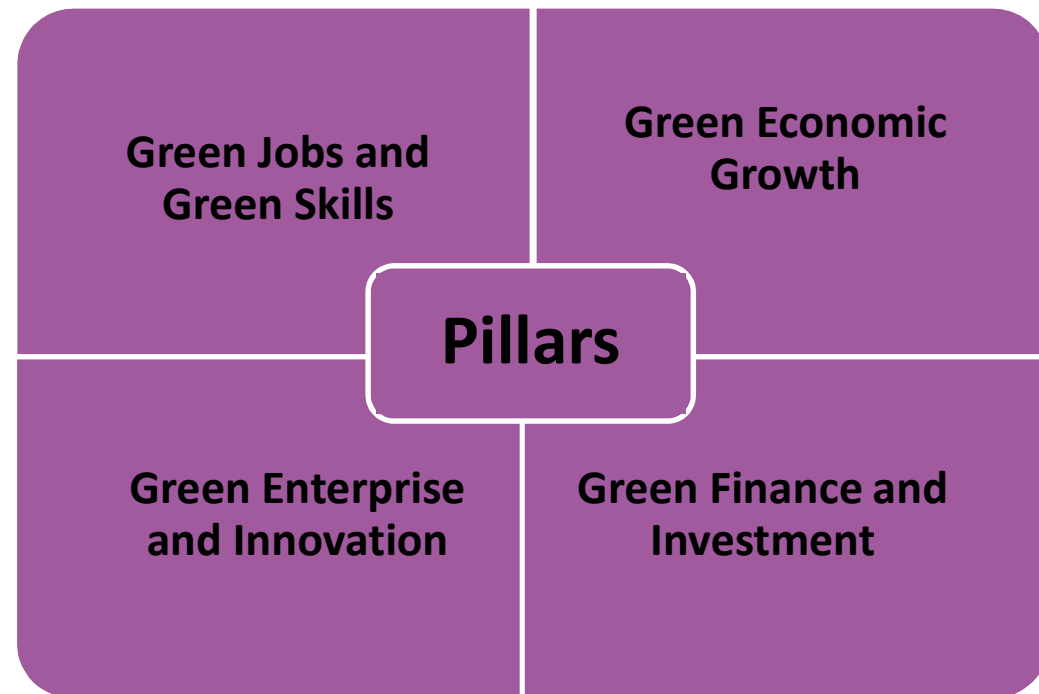
Building a Green Economy

Objective

Double the size of the green economy by 2030 to ensure opportunities for all

Definition

Activity that directly contributes to – or indirectly supports – the achievement of the UK's net zero emissions target and other environmental goals, such as nature restoration and mitigation against climate risks



Be the solution to climate change

**ONE
HOUNSLOW**



London Borough
of Hounslow

**LONDON
COUNCILS**

Vision for the Green Economy

Action plan highlights

Green Skills and Jobs

- Providing residents with upskilling and reskilling opportunities
- Connect council suppliers and in house services aligned to green jobs and skills requirements with local residents and communities
- Provide carbon literacy training

Green Innovation and Enterprise

- Develop proposal for package of incentives for SMEs.
- Focus on improving the sustainability of existing businesses and green consumerism.
- Innovation focus on smart and integrated infrastructure, fibre networks and 5G.

Green Finance and Investment

- Pan-London investment model to operate at scale.
- Unlock emerging sources of capital funding such as UK Infrastructure Bank, climate bonds and community bonds.

Green Growth

- Set environmental standards and targets to encourage low carbon circular solutions.
- Improve London's national-scale supply chain - generating economic growth through linking with wider UK supply chains.
- Linking opportunities for green growth with existing regeneration schemes I
- Developing robust procurement practices

Be the solution to climate change

**ONE
HOUNSLOW**



**London Borough
of Hounslow**

**LONDON
COUNCILS**

Progress

- Published Action Plan and adopted by Steering Group
- Agreed governance changes to establish Working Groups to support Steering Group
- Scoping additional working group members
- Onboarded a knowledge partner, Middlesex University, who will help establish baseline and metrics for monitoring and reporting progress

Next Steps

- Set up working groups with specialized knowledge in each of the priority areas
- Create baselining measures, aligning and embedding measure with the GLA and sub-regional partnerships
- Manage interface with BEIS and UKCCIC work to add value and avoid duplication
- Identifying synergies with other action plans and agreeing how they will be developed and delivered
- Hounslow hosting workshop mid July with other borough climate change leads and partners

Creating a resilient and green London

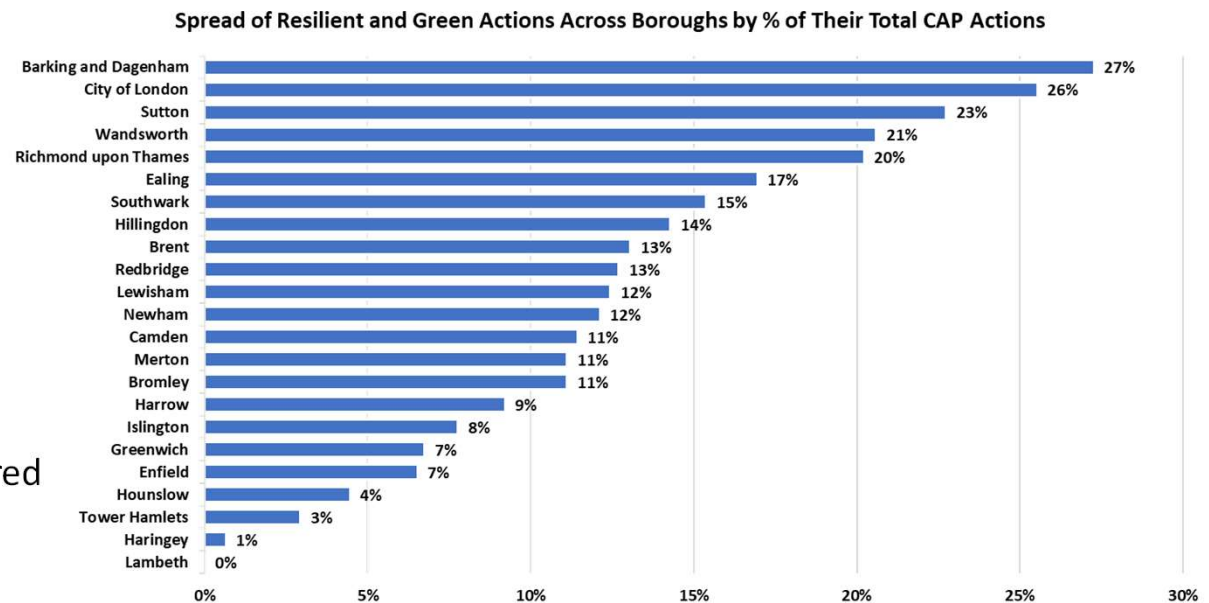


Be the solution to climate change



Background

- Originally 6 programmes, R&G added as a 7th in March 2020
- Identified due to a lack of adaptation across other programmes
- Increased focus on net zero, however adaptation and resilience often left behind
- The R&G action plan aims to encourage consistency, collaborative working and shared learning



Source: London Councils

Be the solution to climate change



Why?



London flooding hits Tube services and roads



'Adapt or die': resilience to climate change needed, says Environment Agency

Report warns England faces more floods and droughts, rising sea levels and greater demand on water supplies



UK temperatures pass 34C for six days in row for first time since records start

Heatwave continues to cause disruption as flooding and storm warnings issued

Be the solution to climate change



Action Plan

- The purpose of this action plan is to achieve the ambition set out in [London Councils Joint Statement on Climate Change](#), to ‘create a resilient and green London’. By this, we mean [**that London should be environmentally, socially and economically resilient to the changing climate, in a way that safeguards and enhances green and blue infrastructure and ensures that they are equally accessible to all**].
- Contains holistic, cross-cutting actions and activities that should be taken across the five key areas, including associated benefits and risks, and potential costs (2021-2030)
 - Overheating
 - Flooding
 - Water scarcity
 - Pests & diseases
 - Enhancing natural capital
- Two year priority work plan
- Identifies the additional powers and resources that will be needed
- Reviews activities currently being undertaken at a borough level
- Identified external partners needed to support the work of this group

Be the solution to climate change



Climate Programmes Showcase

Question & answer

www.londoncouncils.gov.uk/our-key-themes/climate-change



Be the solution to climate change

LONDON
COUNCILS